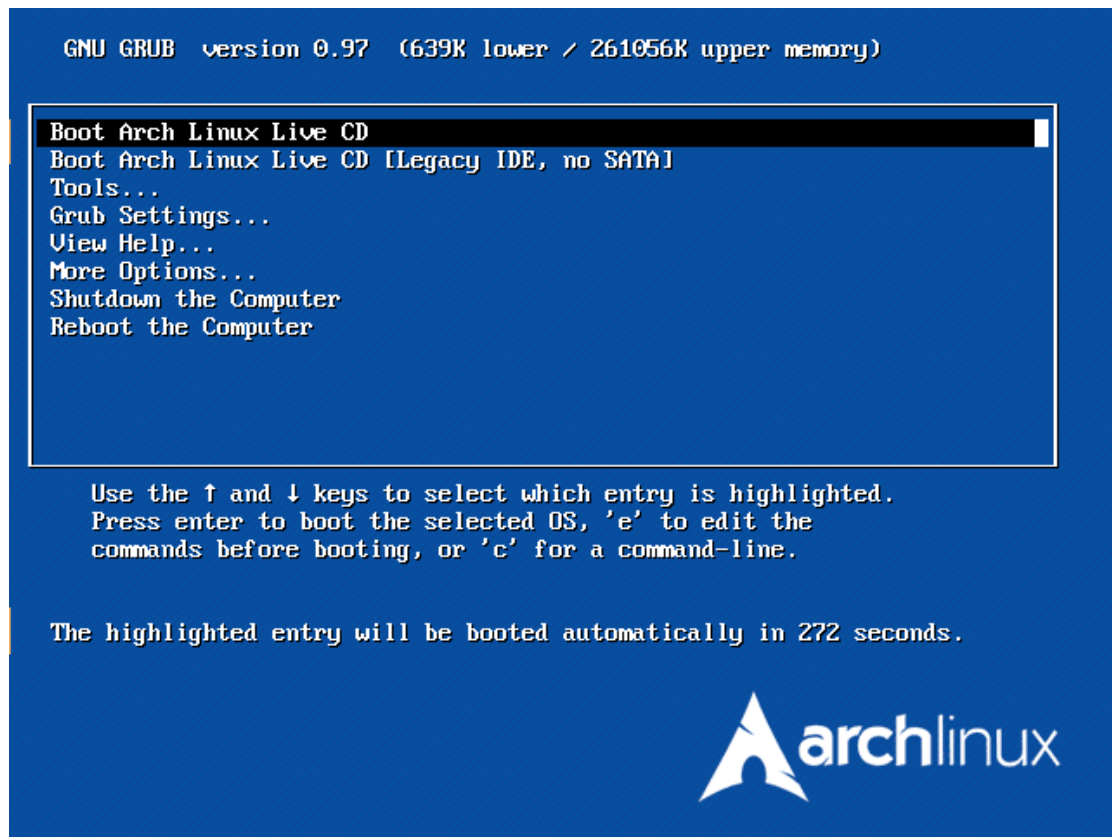


安装 archlinux 2009.08 .截图 2009 年 11 月 5 日 16:36:34

文章链接: <http://ubuntu.cn/redirect.php?tid=39&goto=lastpost#lastpost>

仅供参考,后果自负.



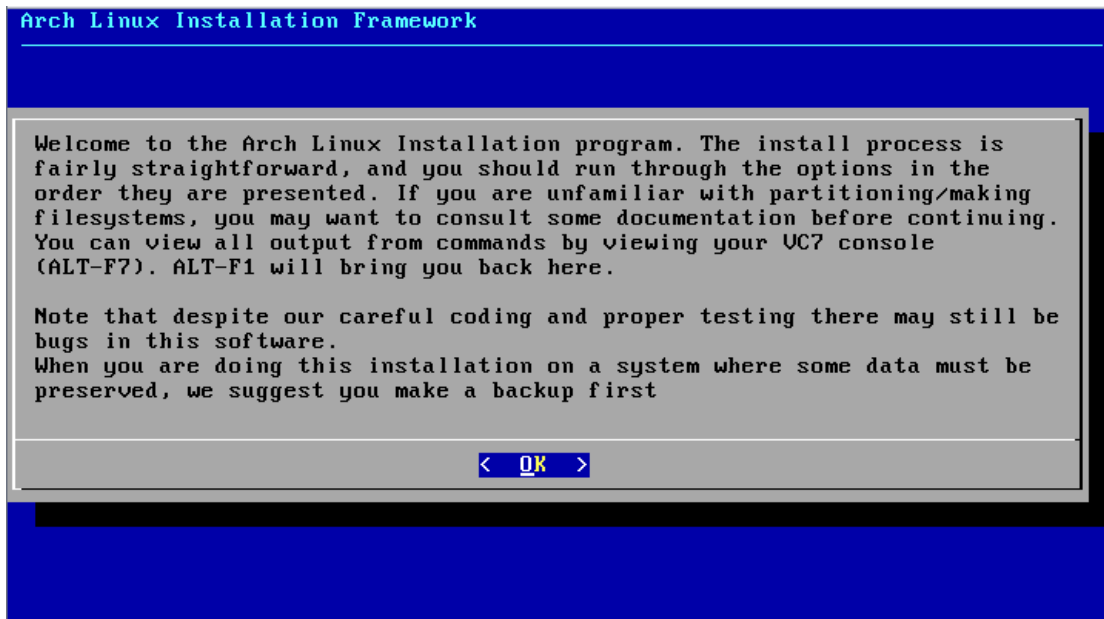
1 初始界面

```
Arch Linux Live ISO (tty1)
Linux-2.6.30-ARCH i686.
Default logins "root" and "arch" have no password.
To begin installation, login as root.
archiso login: root
*****
* To begin installation, run /arch/setup                               *
* You can find documentation at /arch/arch-install-guide.txt         *
*                                                                       *
* i18n: Use the 'km' utility to change your keyboard layout          *
*       and console font.                                             *
*                                                                       *
* If you are looking to install Arch on something more                *
* exotic, such as your kerosene-powered cheese grater,                *
* please consult http://wiki.archlinux.org.                           *
*                                                                       *
*****
[root@archiso ~]# /arch/setup_
```

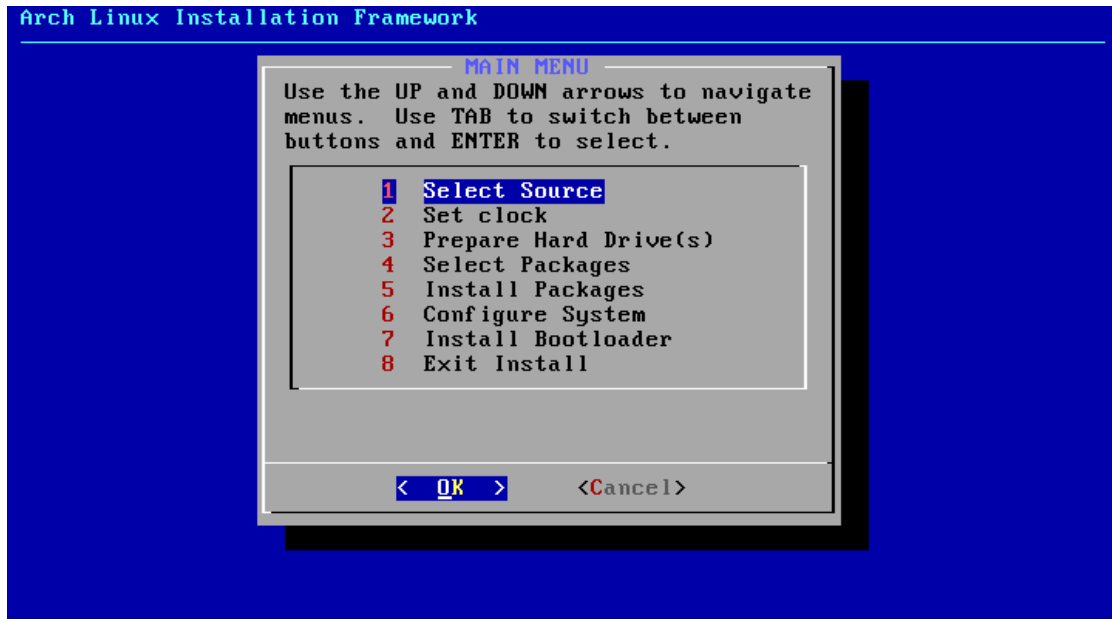
2 root 登录

```
Arch Linux Live ISO (tty1)
Linux-2.6.30-ARCH i686.
Default logins "root" and "arch" have no password.
To begin installation, login as root.
archiso login: root
*****
* To begin installation, run /arch/setup *
* You can find documentation at /arch/arch-install-guide.txt *
* *
* i18n: Use the 'km' utility to change your keyboard layout *
* and console font. *
* *
* If you are looking to install Arch on something more *
* exotic, such as your kerosene-powered cheese grater, *
* please consult http://wiki.archlinux.org. *
* *
*****
[root@archiso ~]# /arch/setup_
```

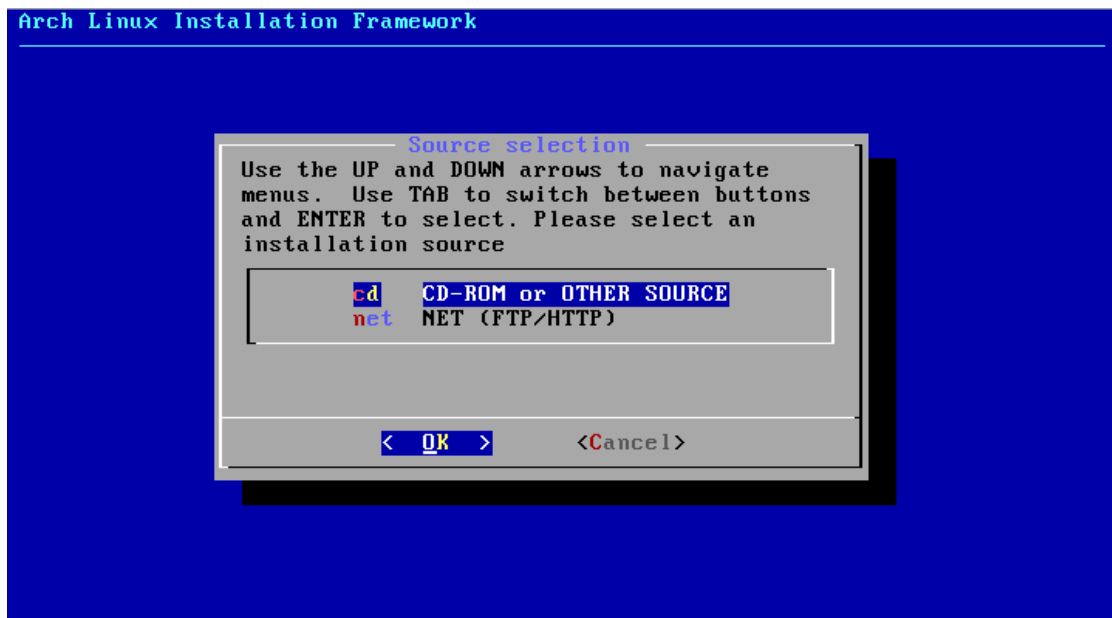
3 /arch/setup 开始安装



4



5 选择安装包的来源



6 选择安装包来源 CD o FTP

Arch Linux CDRom or OTHER SOURCE Installation

Packages included on this disk have been mounted to /src/core/pkg. If you wish to use your own packages from another source, manually mount them there.

< OK >

7 ok

Arch Linux CDRom or OTHER SOURCE Installation

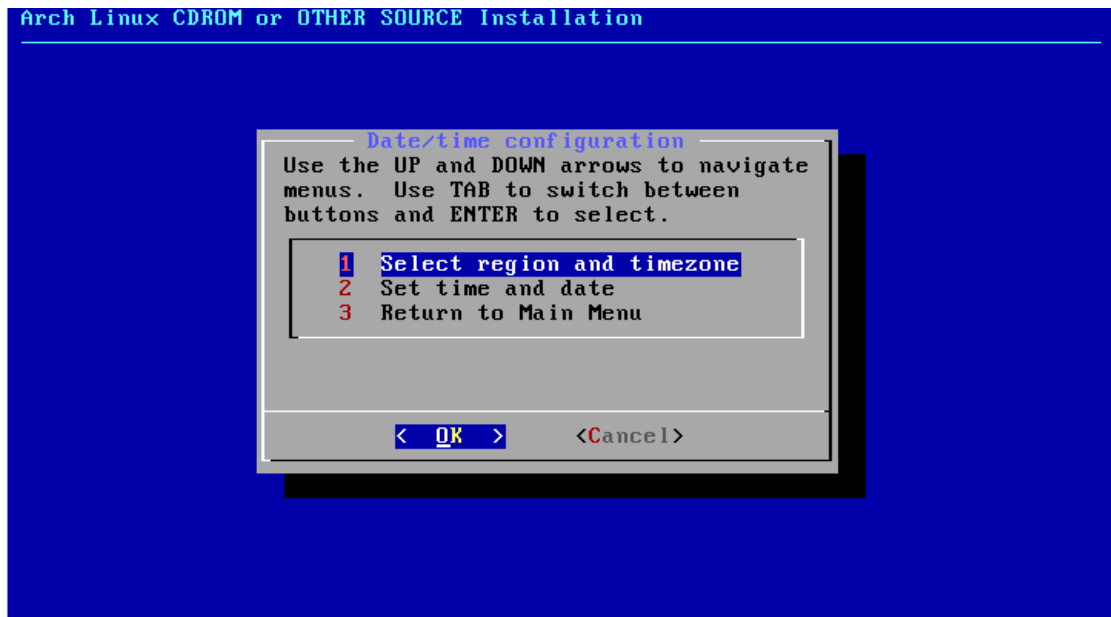
MAIN MENU

Use the UP and DOWN arrows to navigate menus. Use TAB to switch between buttons and ENTER to select.

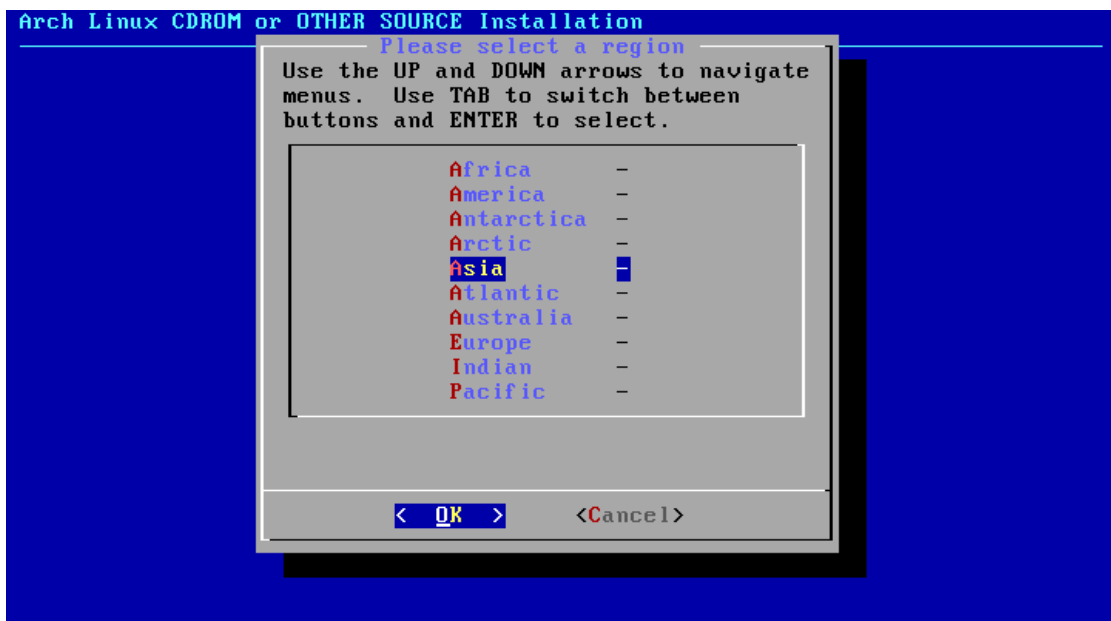
- 1 Select Source
- 2 Set clock
- 3 Prepare Hard Drive(s)
- 4 Select Packages
- 5 Install Packages
- 6 Configure System
- 7 Install Bootloader
- 8 Exit Install

< OK > <Cancel>

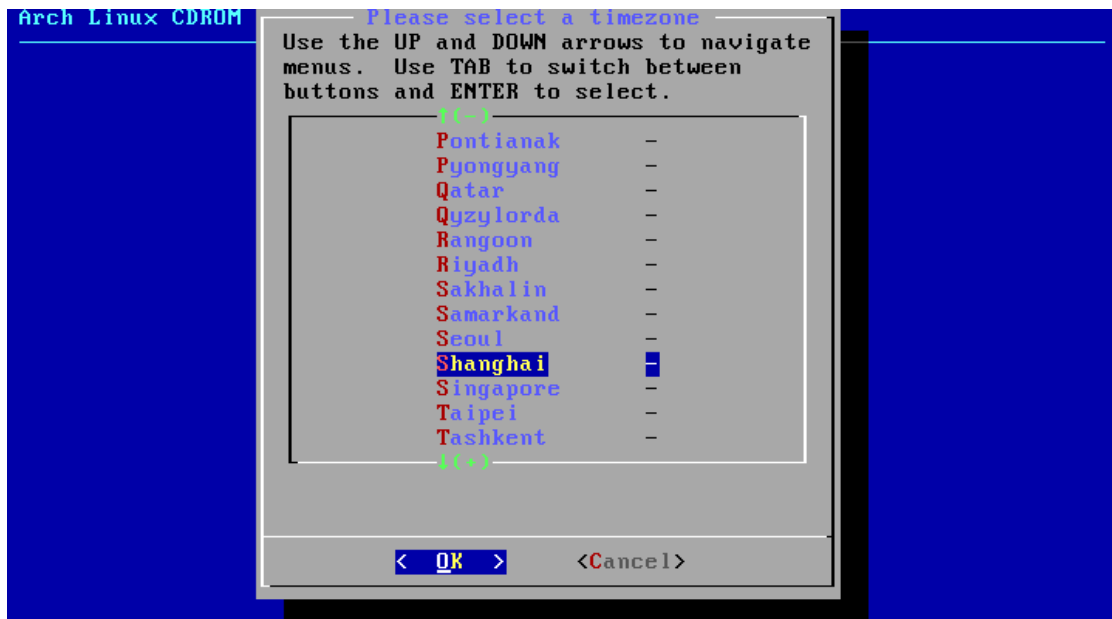
8 time-zone and time setting



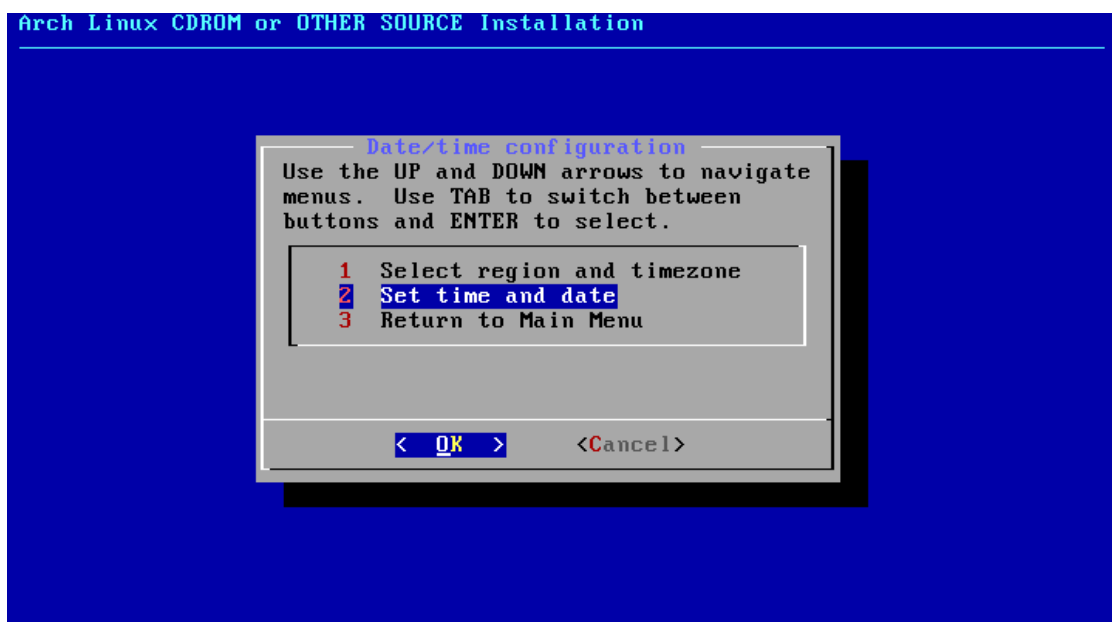
9 enter



10 choose Asia & Enter



11 choose shanghai or Chongqing



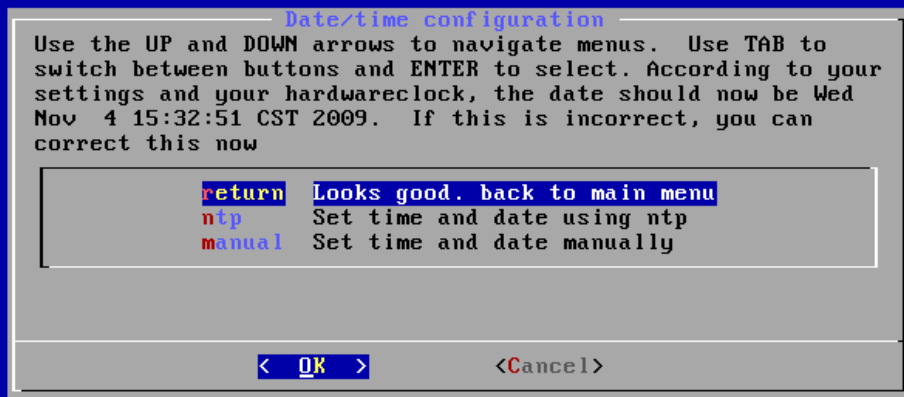
12 set time and date Enter

Arch Linux CDRom or OTHER SOURCE Installation

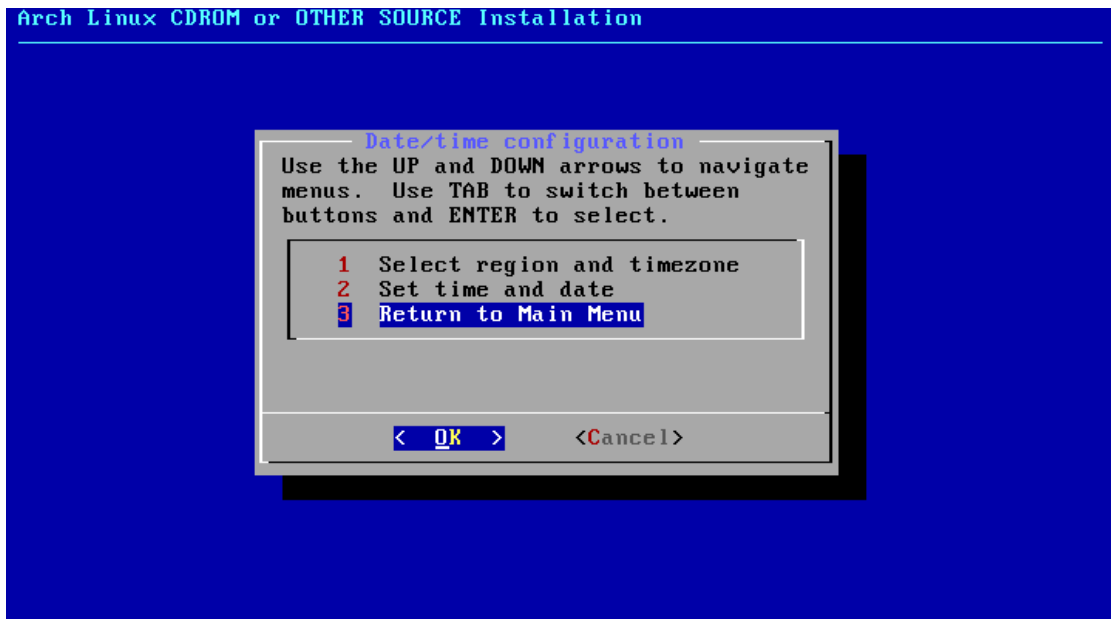


13 Localtime

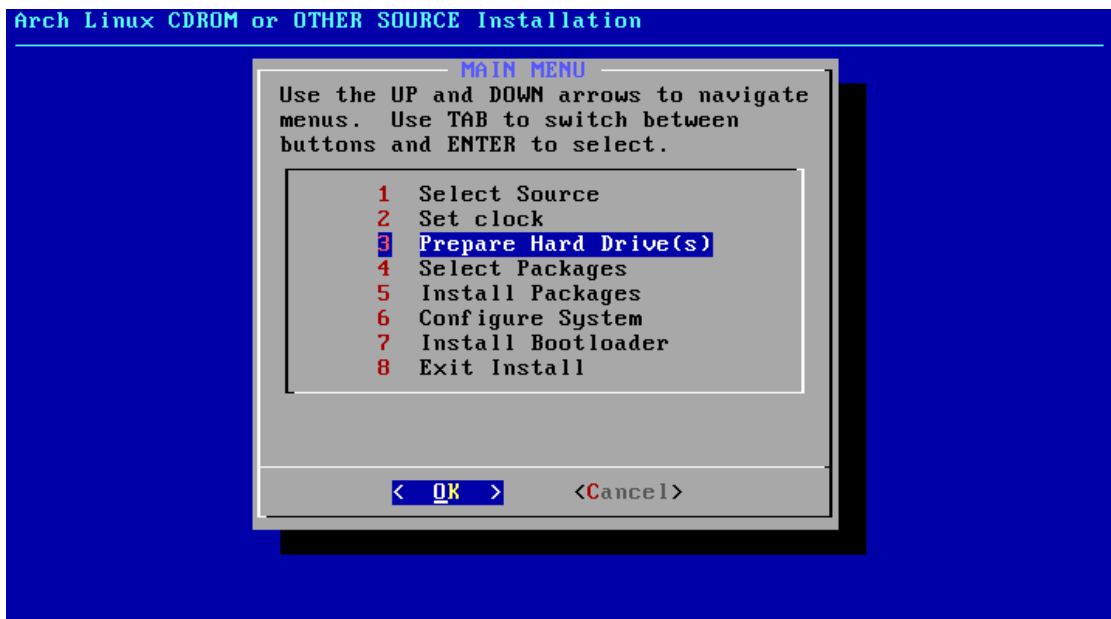
Arch Linux CDRom or OTHER SOURCE Installation



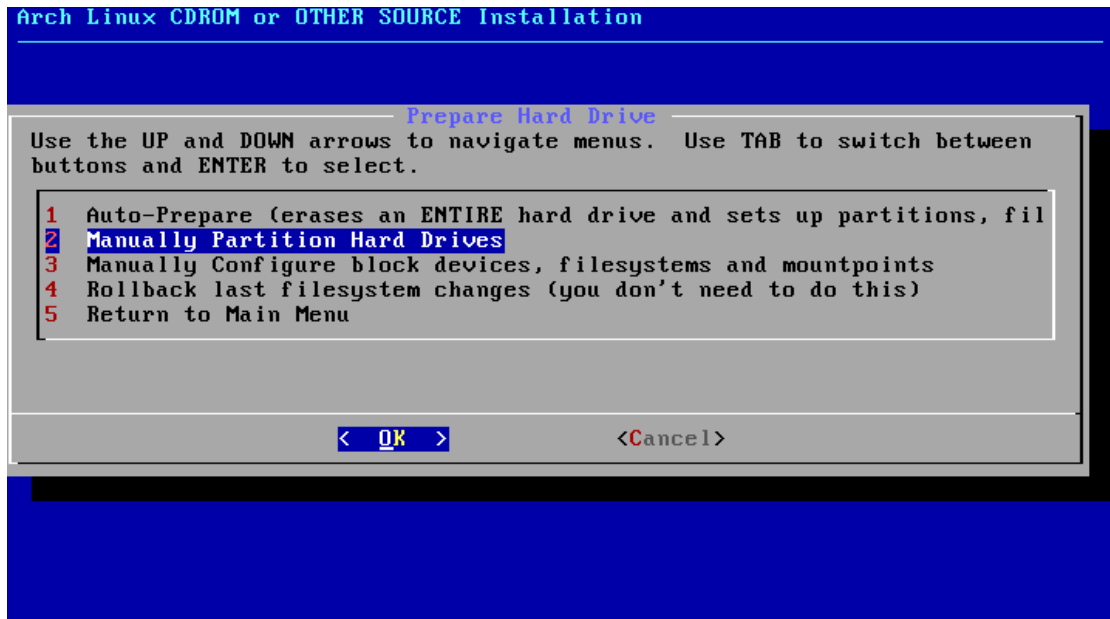
14 check the time setting



15



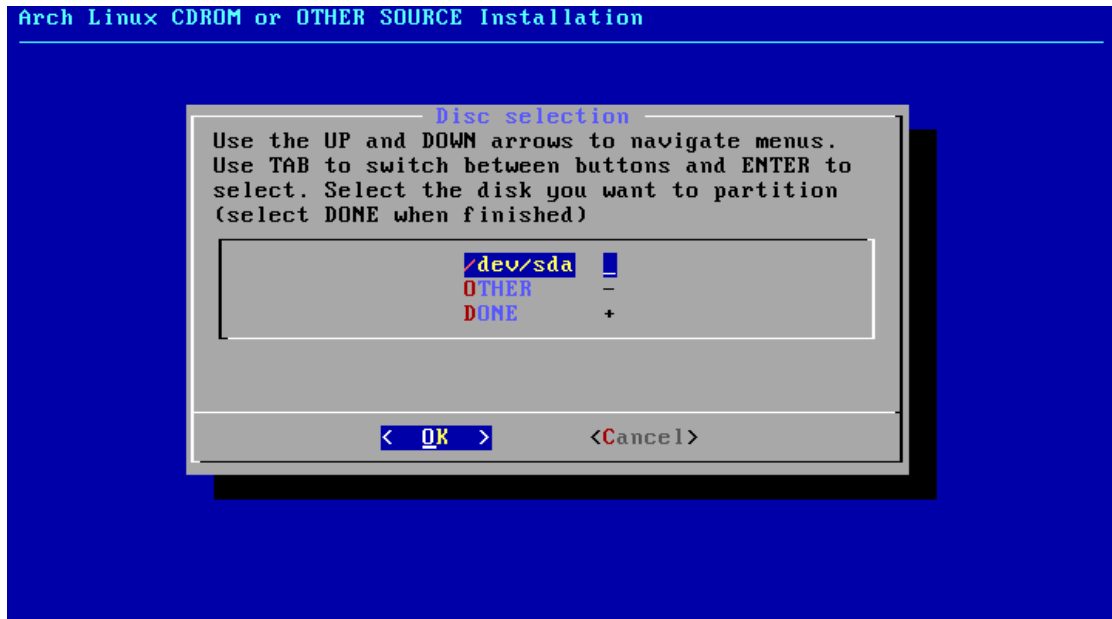
16 准备分区挂载！



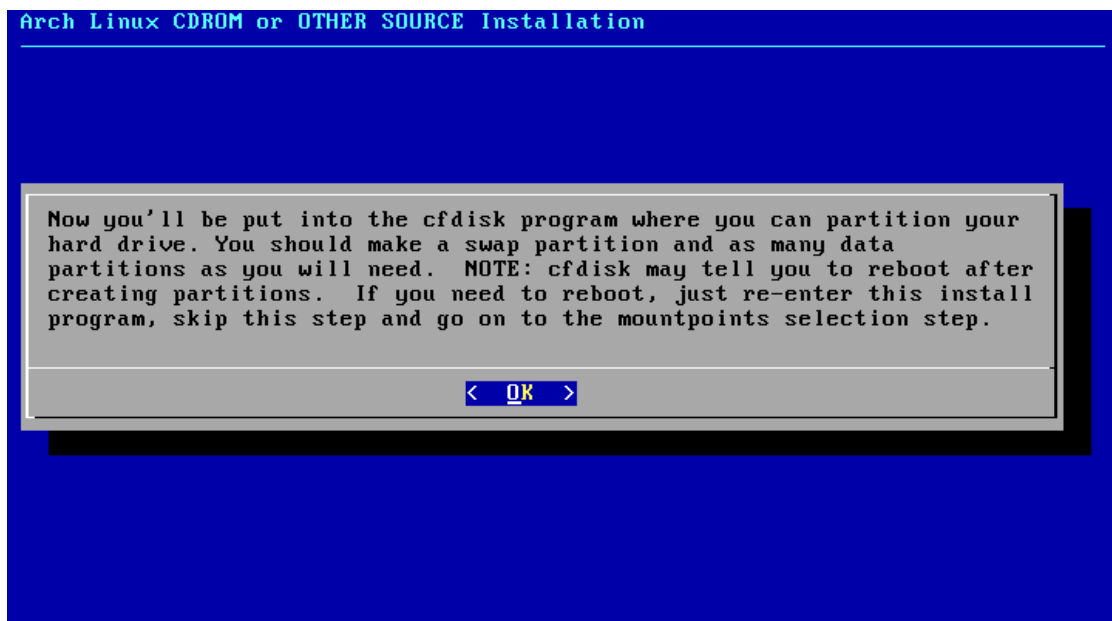
17 手动分区，若系统分区已经分好，直接进入图中[3]



18 (这是在虚拟机中--类似于全空的硬盘--所以只有一个选项，若是安装双系统，则选择你将要分的空白分区)



19 分选定的空白分区



20 提示进入分区阶段 及 分区应注意事项 Enter 是开始，esc 是退出（全部操作都适用）

```
cfdisk (util-linux-ng 2.14.2)

      Disk Drive: /dev/sda
      Size: 5368709120 bytes, 5368 MB
      Heads: 255   Sectors per Track: 63   Cylinders: 652

  Name      Flags      Part Type  FS Type      [Label]      Size (MB)
  -----
  Pri/Log   Free Space                    5362.89

[ Help ] [ New ] [ Print ] [ Quit ] [ Units ]
[ Write ]

Create new partition from free space_
```

21 选择 new 新建一个分区

```
cfdisk (util-linux-ng 2.14.2)

      Disk Drive: /dev/sda
      Size: 5368709120 bytes, 5368 MB
      Heads: 255   Sectors per Track: 63   Cylinders: 652

  Name      Flags      Part Type  FS Type      [Label]      Size (MB)
  -----
  Pri/Log   Free Space                    5362.89

[Primary] [Logical] [Cancel ]

Create a new logical partition_
```

22 选择分区类型（主分区或是逻辑分区，请参考 UBUNTO.CN 上的分区建议）

```

cfdisk (util-linux-ng 2.14.2)

        Disk Drive: /dev/sda
        Size: 5368709120 bytes, 5368 MB
        Heads: 255   Sectors per Track: 63   Cylinders: 652

  Name      Flags      Part Type  FS Type      [Label]      Size (MB)
  -----
  Pri/Log    Free Space                    5362.89

Size (in MB): 5362.88
```

23 确定分区大小

```

cfdisk (util-linux-ng 2.14.2)

        Disk Drive: /dev/sda
        Size: 5368709120 bytes, 5368 MB
        Heads: 255   Sectors per Track: 63   Cylinders: 652

  Name      Flags      Part Type  FS Type      [Label]      Size (MB)
  -----
  Pri/Log    Free Space                    5362.89

Size (in MB): 56_
```

24 新建一个分区（图中 56M 分区将用于 boot 分区）

```

cfdisk (util-linux-ng 2.14.2)

                Disk Drive: /dev/sda
            Size: 5368709120 bytes, 5368 MB
        Heads: 255   Sectors per Track: 63   Cylinders: 652

    Name      Flags      Part Type  FS Type      [Label]      Size (MB)
    -----
    Pri/Log   Free Space   5362.89

    [Beginning] [ End ] [ Cancel ]

    Add partition at beginning of free space_

```

25 选择分区位置（首尾）

```

cfdisk (util-linux-ng 2.14.2)

                Disk Drive: /dev/sda
            Size: 5368709120 bytes, 5368 MB
        Heads: 255   Sectors per Track: 63   Cylinders: 652

    Name      Flags      Part Type  FS Type      [Label]      Size (MB)
    -----
    sda1      Primary   Linux      57.58
    Pri/Log   Free Space   5305.31

    [ Bootable ] [ Delete ] [ Help ] [ Maximize ] [ Print ]
    [ Quit ] [ Type ] [ Units ] [ Write ]

    Write partition table to disk (this might destroy data)_

```

26 分区写入

```

cfdisk (util-linux-ng 2.14.2)

        Disk Drive: /dev/sda
        Size: 5368709120 bytes, 5368 MB
        Heads: 255   Sectors per Track: 63   Cylinders: 652

    Name      Flags      Part Type  FS Type      [Label]      Size (MB)
    -----
    sda1              Primary    Linux         57.58
                   Pri/Log    Free Space    5305.31

Are you sure you want to write the partition table to disk? (yes or no): ye
Warning!!  This may destroy data on your disk!

```

27 输入 yes 将分区方案写入分区表

```

cfdisk (util-linux-ng 2.14.2)

        Disk Drive: /dev/sda
        Size: 5368709120 bytes, 5368 MB
        Heads: 255   Sectors per Track: 63   Cylinders: 652

    Name      Flags      Part Type  FS Type      [Label]      Size (MB)
    -----
    sda1              Primary    Linux         57.58
                   Pri/Log    Free Space    5305.31

[ Help ] [ New ] [ Print ] [ Quit ] [ Units ]
[ Write ]

Create new partition from free space_

```

28 重复如上步骤，新建另外的分区

```

cfdisk (util-linux-ng 2.14.2)

Disk Drive: /dev/sda
Size: 5368709120 bytes, 5368 MB
Heads: 255 Sectors per Track: 63 Cylinders: 652

Name      Flags      Part Type  FS Type      [Label]      Size (MB)
-----
sda1      Boot       Primary   Linux        57.58
sda5      Logical    Linux     509.97
sda6      Logical    Linux     4285.38
sda7      Logical    Linux     509.97

[ Bootable ] [ Delete ] [ Help ] [ Maximize ] [ Print ]
[ Quit ] [ Type ] [ Units ] [ Write ]
Wrote partition table to disk
Toggle bootable flag of the current partition_

```

29 over 要有一个是 bootable 分区，启动，选择新建的用于 boot 挂载的 56M 分区

```

cfdisk (util-linux-ng 2.14.2)

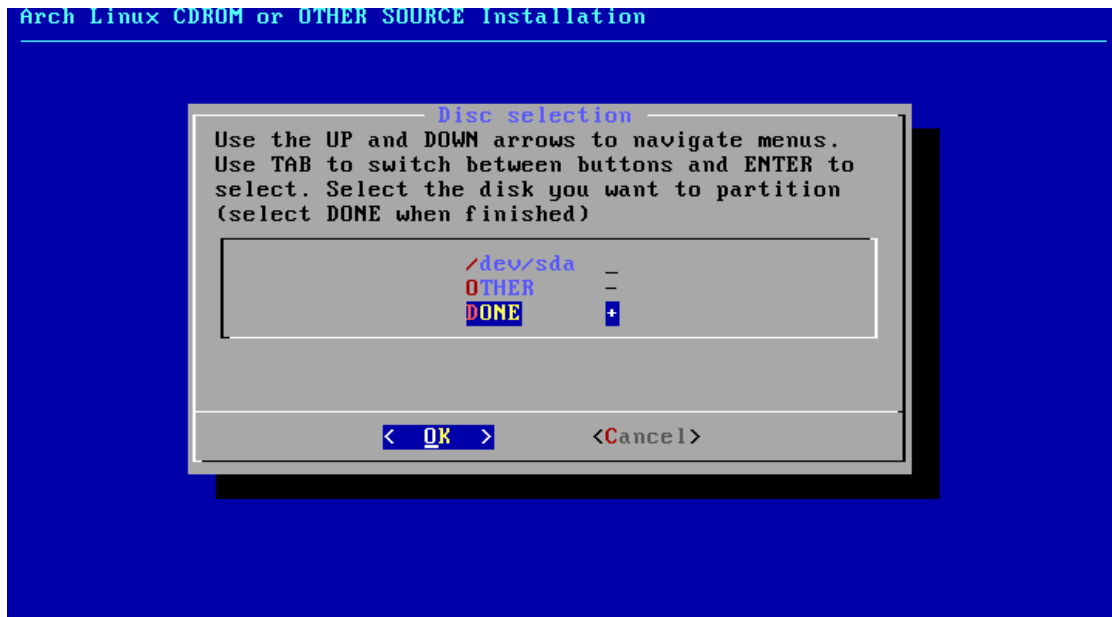
Disk Drive: /dev/sda
Size: 5368709120 bytes, 5368 MB
Heads: 255 Sectors per Track: 63 Cylinders: 652

Name      Flags      Part Type  FS Type      [Label]      Size (MB)
-----
sda1      Boot       Primary   Linux        57.58
sda5      Logical    Linux     509.97
sda6      Logical    Linux     4285.38
sda7      Logical    Linux     509.97

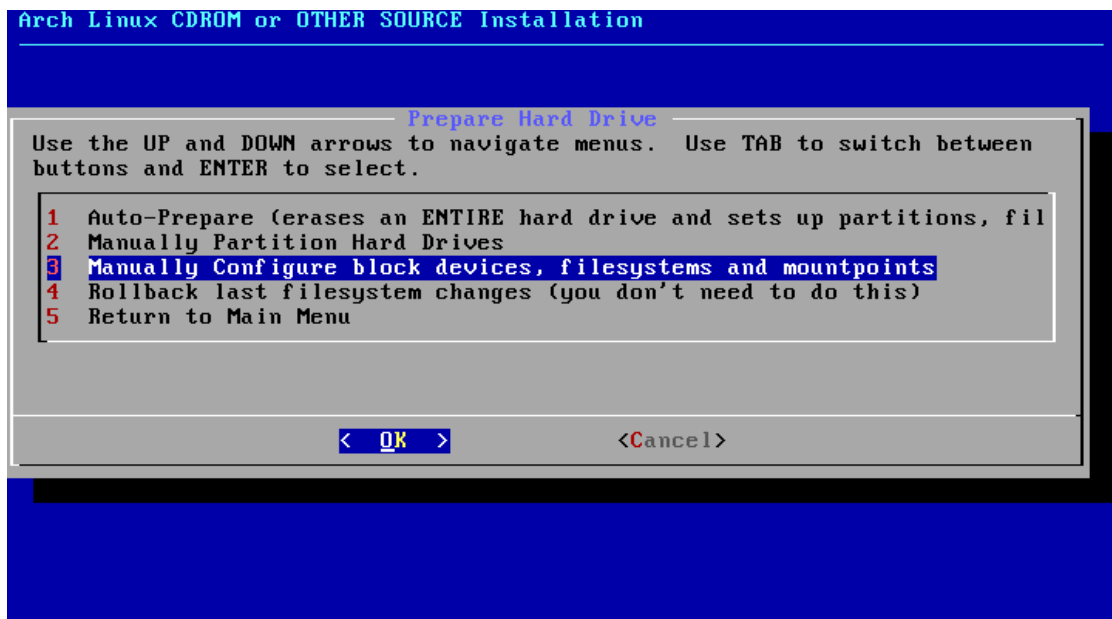
Are you sure you want to write the partition table to disk? (yes or no): ye
Warning!! This may destroy data on your disk!

```

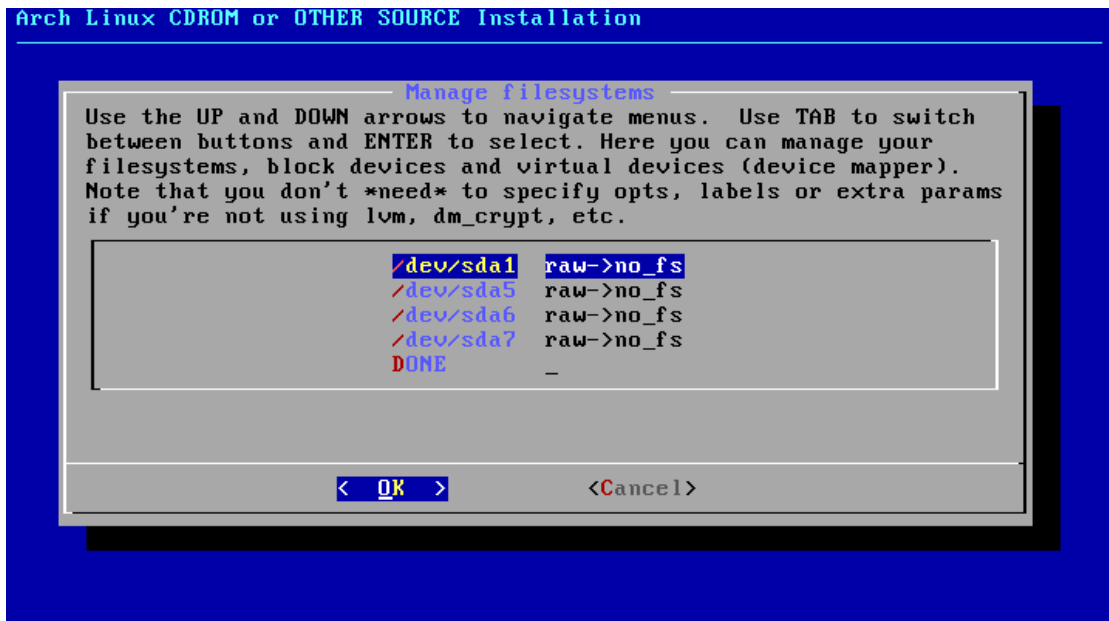
30 写入 后 选择 quit 退出



31 选择 DONE 确定分区结束



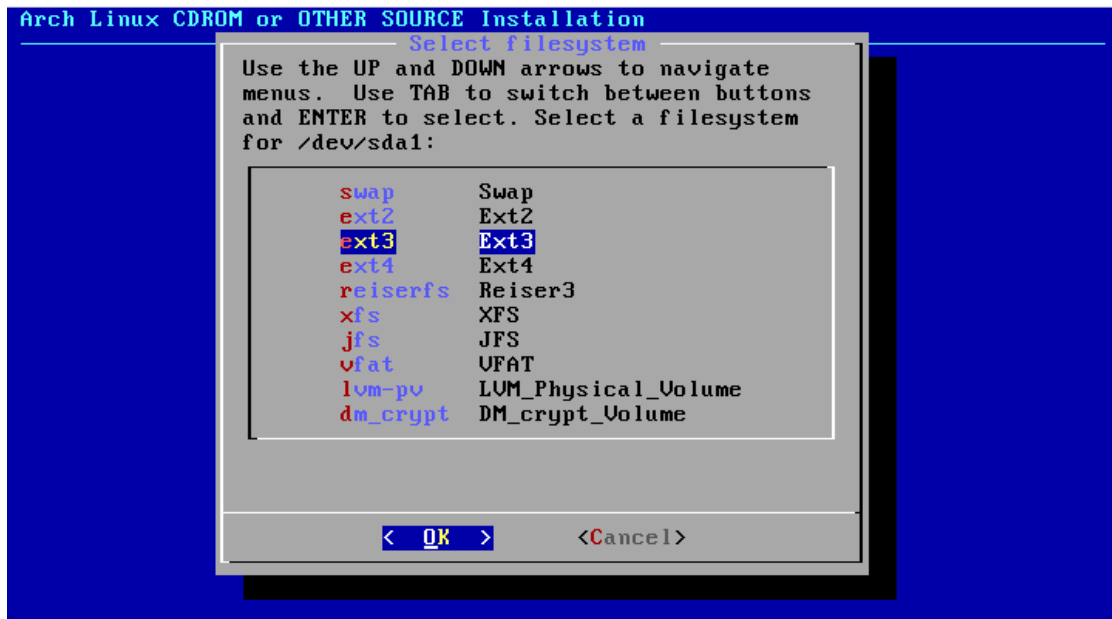
32 手动选择挂载点，分区格式等



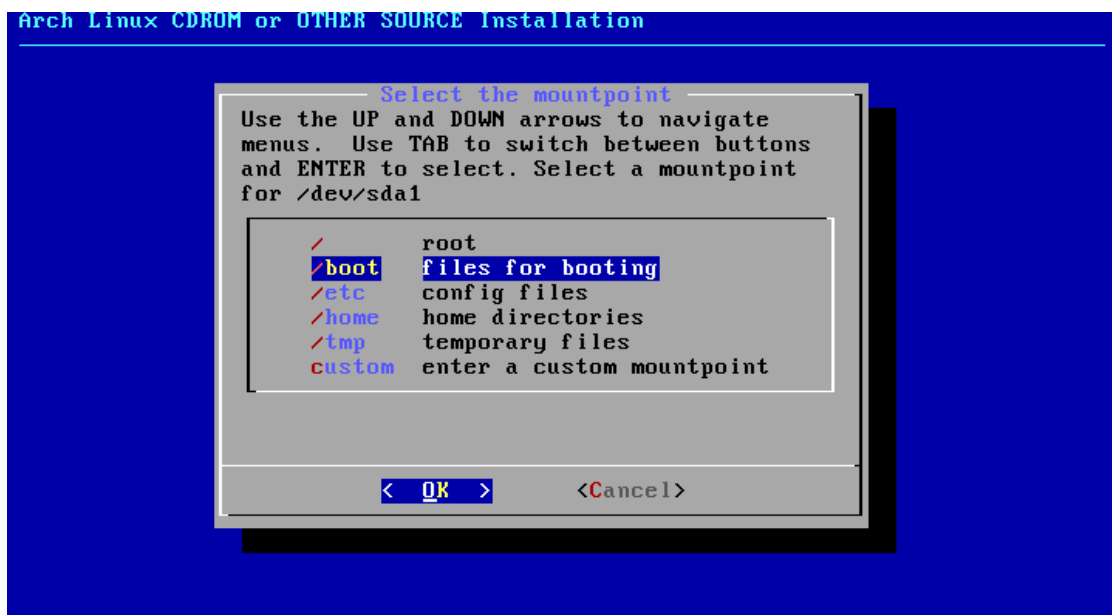
33 按 Enter 开始挂载刚才的 bootable 分区，（按计划用于 boot）



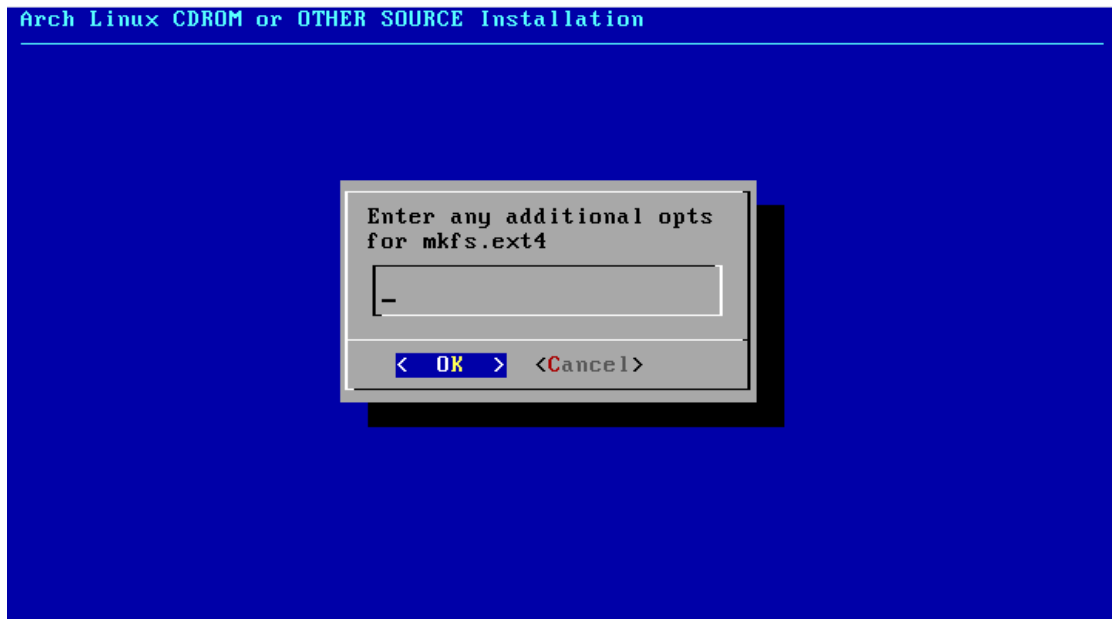
34 enter (确定是否格式化，yes 则格式化，重装 linux 系统时，home 分区可以选择 NO，保留原有数据，待进入系统新建用户时，新建一个与原来一样的用户名账户)



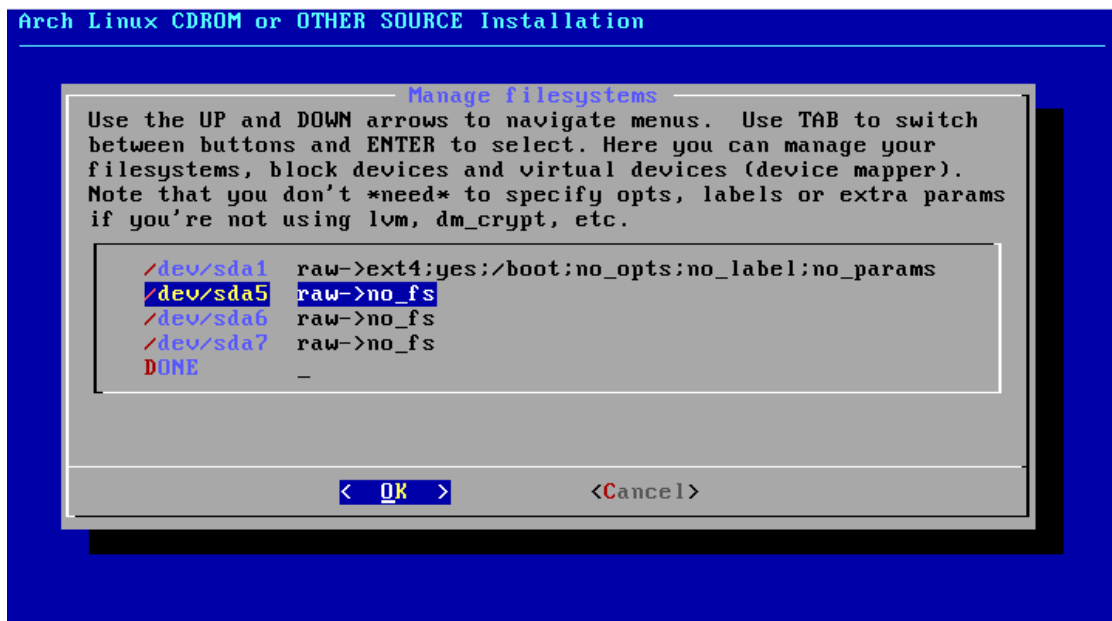
35 选择分区格式



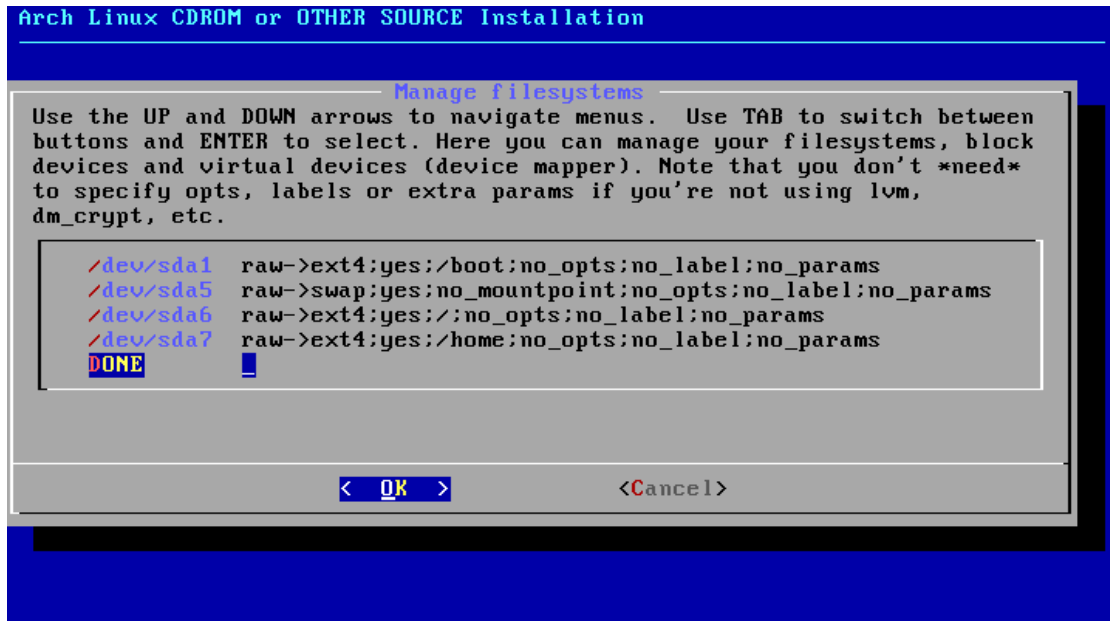
36 选择挂载点（按照计划用于 boot）



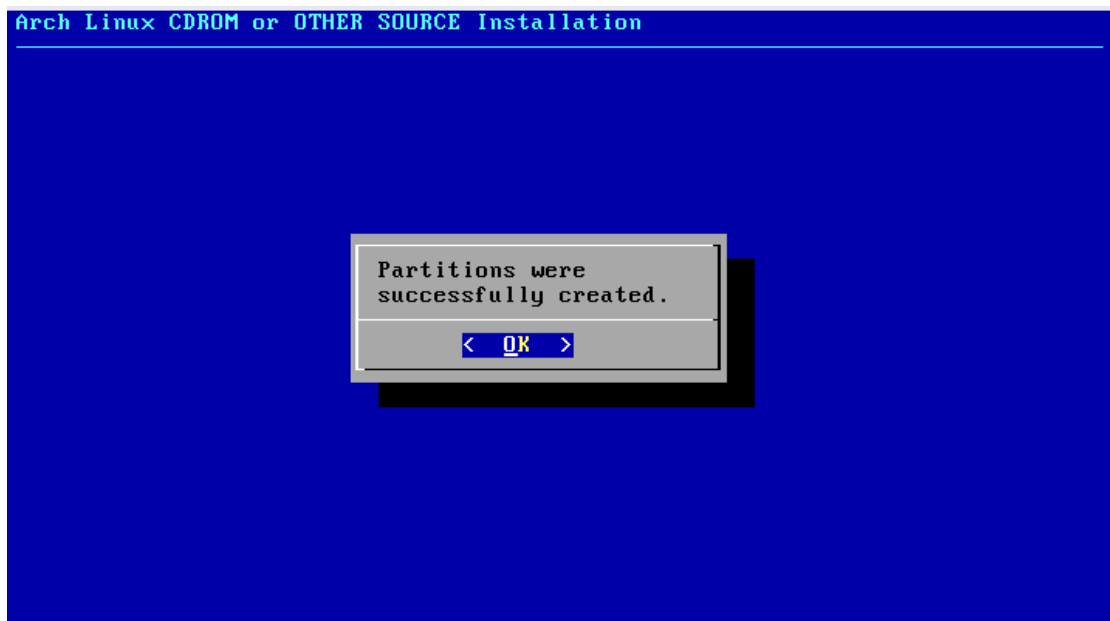
37 enter any additional options for making filesystem_ext4（无特殊要求，留白即可）



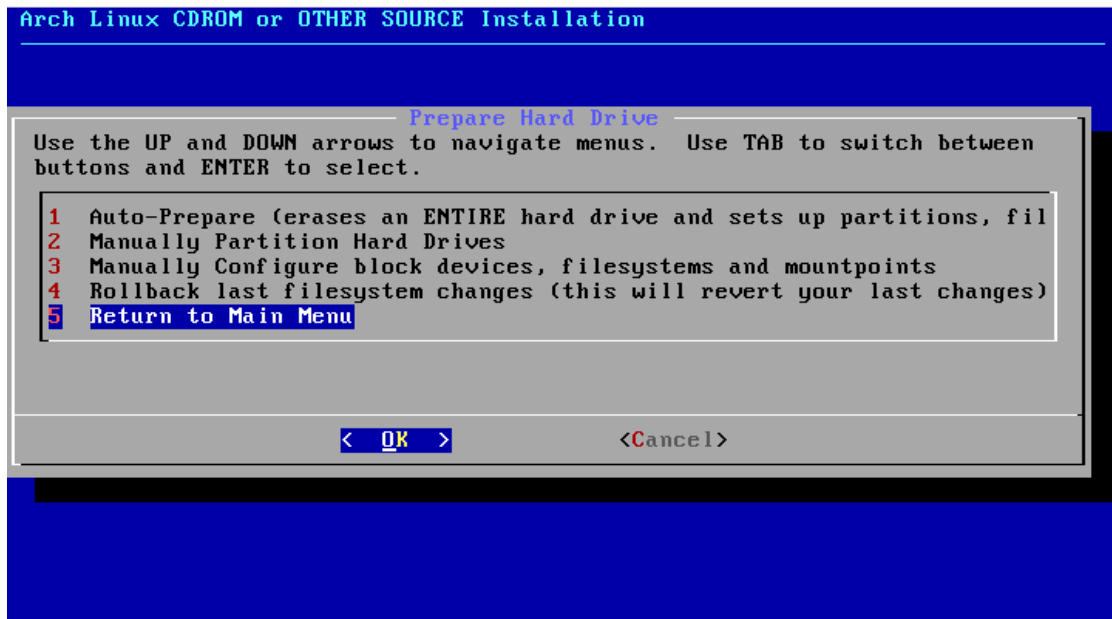
38 重复 如上步骤，挂载其他分区



39 全部分区选定后, DONE 确定, 开始格式化!



40 Enter



41 返回上级菜单



42 选择安装包 Enter

Arch Linux CDRom or OTHER SOURCE Installation

Package selection is split into two stages. First you will select package groups that contain packages you may be interested in. Then you will be presented with a full list of packages for each group, allowing you to fine-tune.

Note that right now the packages (and groups) selection is limited to the repos available at this time (core). Once you have your Arch system up and running, you have access to more repositories and packages.

< OK >

43 提示 包的选择，图中“one you have your...”中的 one 似有误，应为 once，一旦你...

Arch Linux CDRom or OTHER SOURCE Installation

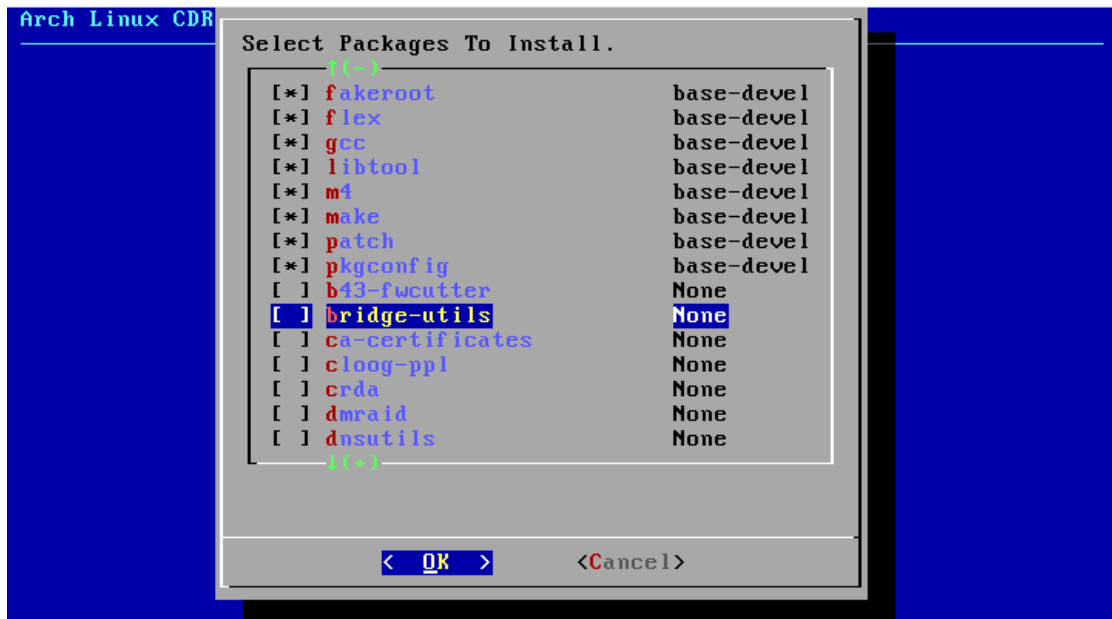
Select Package groups
DO NOT deselect BASE unless you know what you're doing!

<input checked="" type="checkbox"/>	base	^
<input type="checkbox"/>	base-devel	-

< OK >

<Cancel>

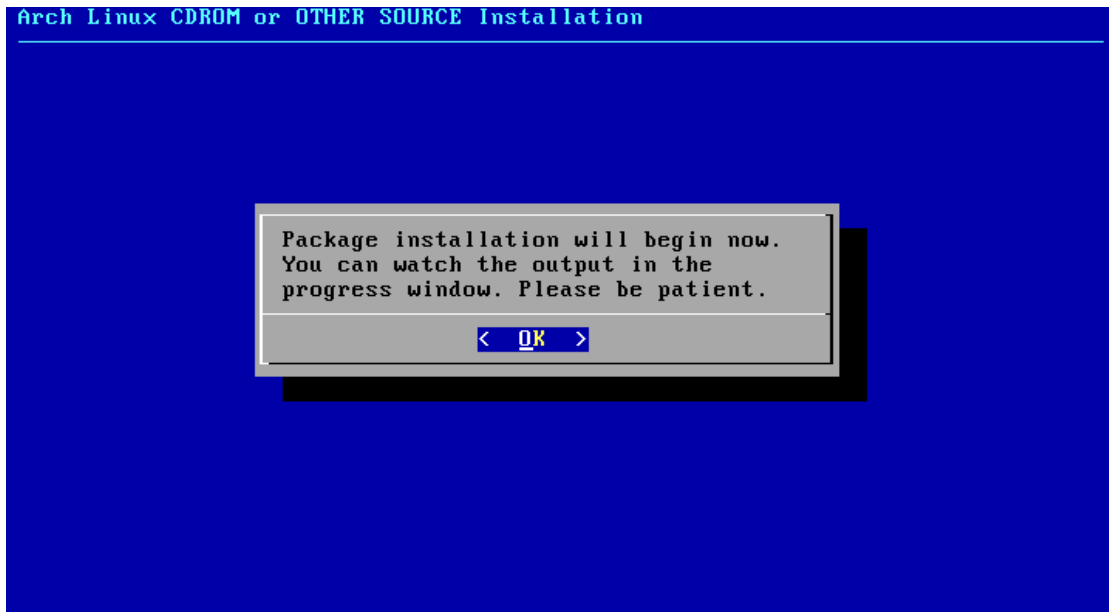
44 按 空格键 选择或逆选择 包——建议新手都选择，具体请参考 wiki



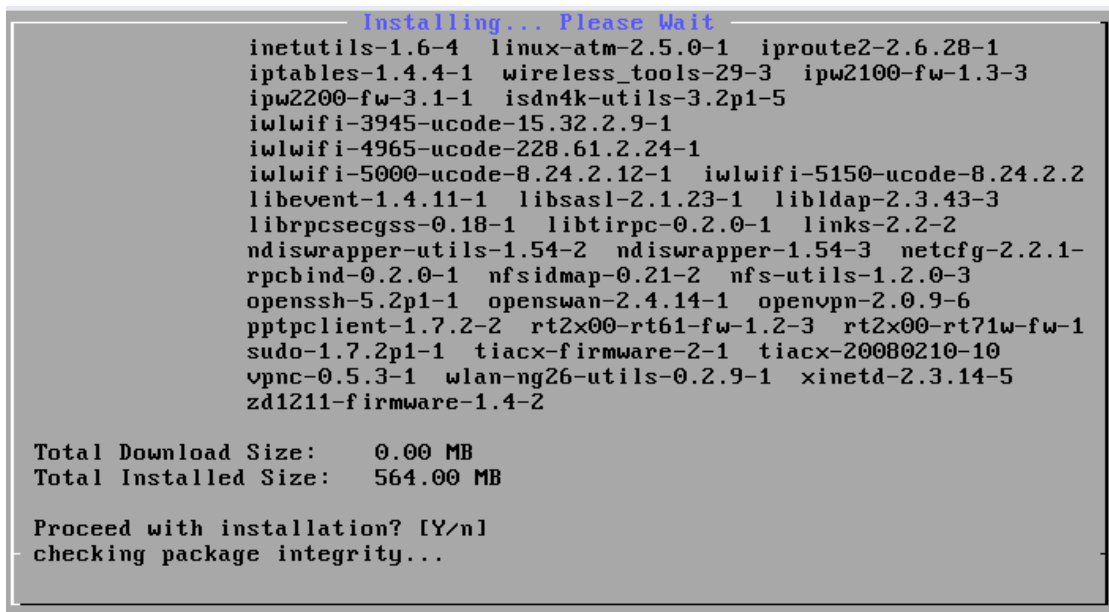
45 详细的包列表，若知道包的用途，可以进一步选择或逆选 之后 enter



46 ENTER 开始安装所选择的 包



47 提示你，现在你有一点时间去__吁吁



48 你在尿尿时的显示，不需要选择 Y 或 N


```

Installing... Please Wait
installing popt...
installing e2fsprogs...
installing cryptsetup...
installing dash...
installing expat...
installing filesystem...
installing dbus-core...
installing dcron...
installing dhcpcd...
installing dialog...
installing diffutils...
installing file...
installing gawk...
installing gdbm...
installing gen-init-cpio...
installing gettext...
Optional dependencies for gettext
    cvs: for autopoint tool
installing pcre...
installing grep...
installing perl...
-

```

49 还在安装 ing...

```

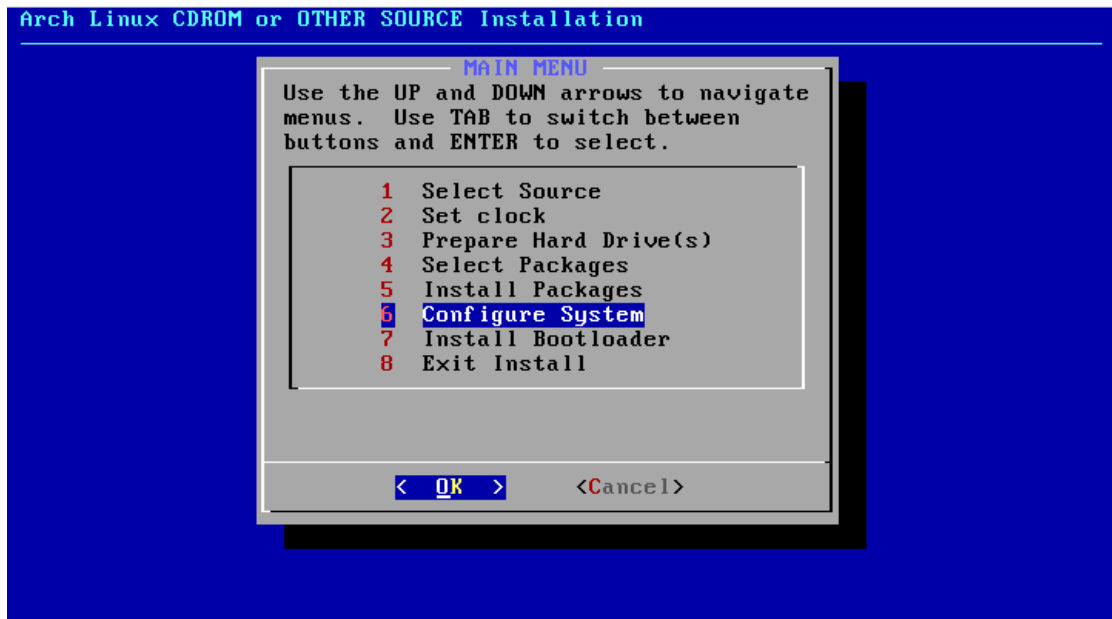
Installation Complete
STARTING pacman_installpkg . Executing pacman --root /mnt --config /tmp/pa
resolving dependencies...
looking for inter-conflicts...

Targets (173): kernel-headers-2.6.30.1-1 tzdata-2009k-1 glibc-2.10.1-3
attr-2.4.43-1 acl-2.2.47-2 ncurses-5.7-2 readline-6.0.00
bash-4.0.028-1 zlib-1.2.3.3-3 binutils-2.19.1-5
bzip2-1.0.5-4 gcc-libs-4.4.1-1 db-4.7.25.4-1
cracklib-2.8.13-2 pam-1.0.4-1 shadow-4.1.4.2-1 gmp-4.3.1
coreutils-7.4-1 cpio-2.10-1 device-mapper-1.02.33-1
libgpg-error-1.6-1 findutils-4.4.2-1 gzip-1.3.12-6
texinfo-4.13a-3 libgcrypt-1.4.4-2 popt-1.14-1
e2fsprogs-1.41.8-1 cryptsetup-1.0.6-3 dash-0.5.5.1-2
expat-2.0.1-2 filesystem-2009.07-1 dbus-core-1.2.14-1
dcron-3.2-4 dhcpcd-5.0.6-1 dialog-1.1_20080819-2
diffutils-2.8.1-6 file-5.03-2 gawk-3.1.7-1 gdbm-1.8.3-6
gen-init-cpio-2.6.17-3 gettext-0.17-3 pcre-7.9-1
grep-2.5.4-3 perl-5.10.0-6 groff-1.20.1-2 sed-4.2.1-1
grub-0.97-16 hdparm-9.21-1 util-linux-ng-2.14.2-1 udev-1
net-tools-1.60-14 kbd-1.15-2 sysvinit-2.86-5

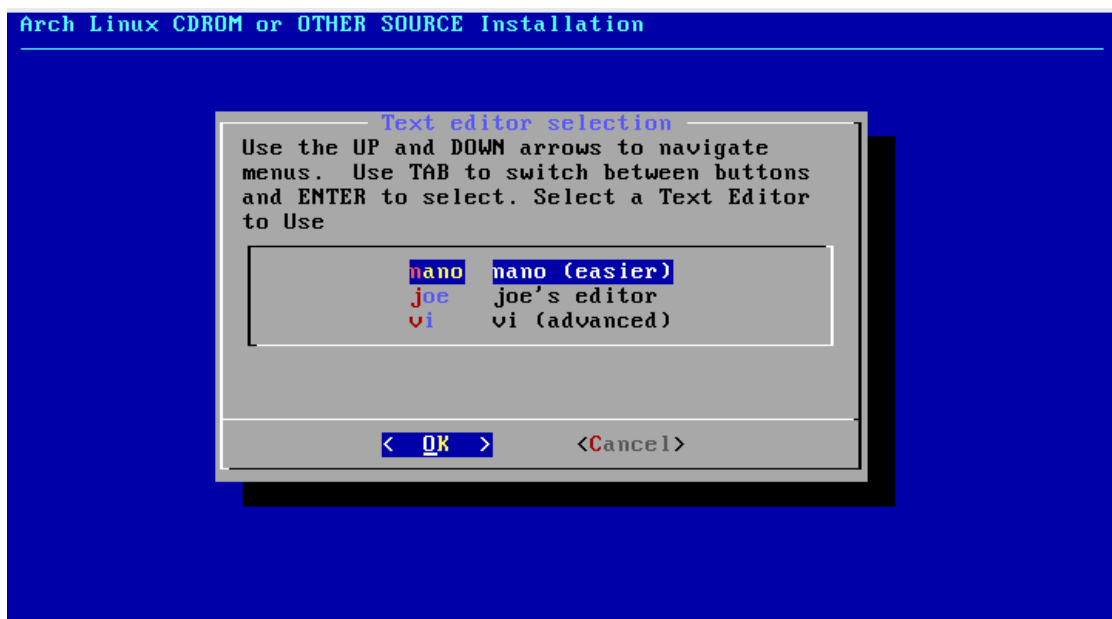
[<-] 20%
[Continue]

```

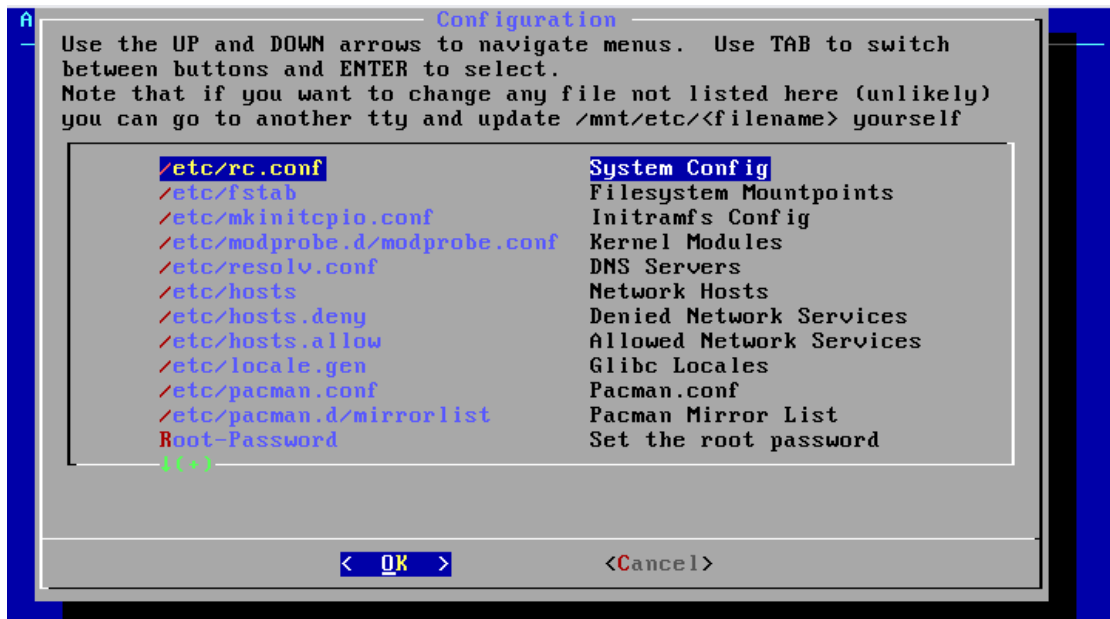
50 点 enter 继续



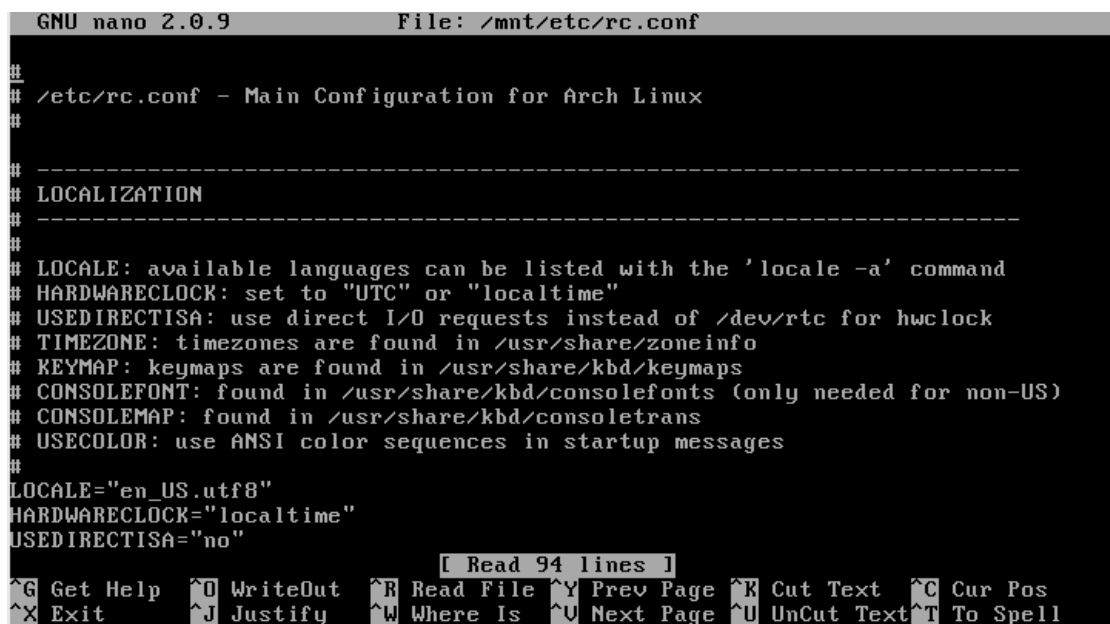
51 配置



52 选择编辑器 nano vi



53 选择欲编辑的选项



54 rc.conf 主要编辑 locale 和 网络 and 守护程序

```

...
....
# - no hyphens in your interface names - Bash doesn't like it
#
#dhcp: Set your interface to "dhcp" (eth0="dhcp")
#Wireless: See network profiles below
#

#Static IP example
eth0="eth0 218.193.12.21 netmask 255.255.255.0 broadcast 218.193.12.255 "
eth0="dhcp"
INTERFACES=(eth0)

# Routes to start at boot-up (in this order)
# Declare each route then list in ROUTES
# - prefix an entry in ROUTES with a ! to disable it
#
#gateway="default gw 218.193.12.1"
ROUTES=(gateway)

# Enable these network profiles at boot-up. These are only useful
# if you happen to need multiple network configurations (ie, laptop users)
# - set to 'menu' to present a menu during boot-up (dialog package required)
# - prefix an entry with a ! to disable it
#
# Network profiles are found in /etc/network.d
#

```

55 我的 rc.conf 网络配置（请按照自己的情况从配置 wiki）

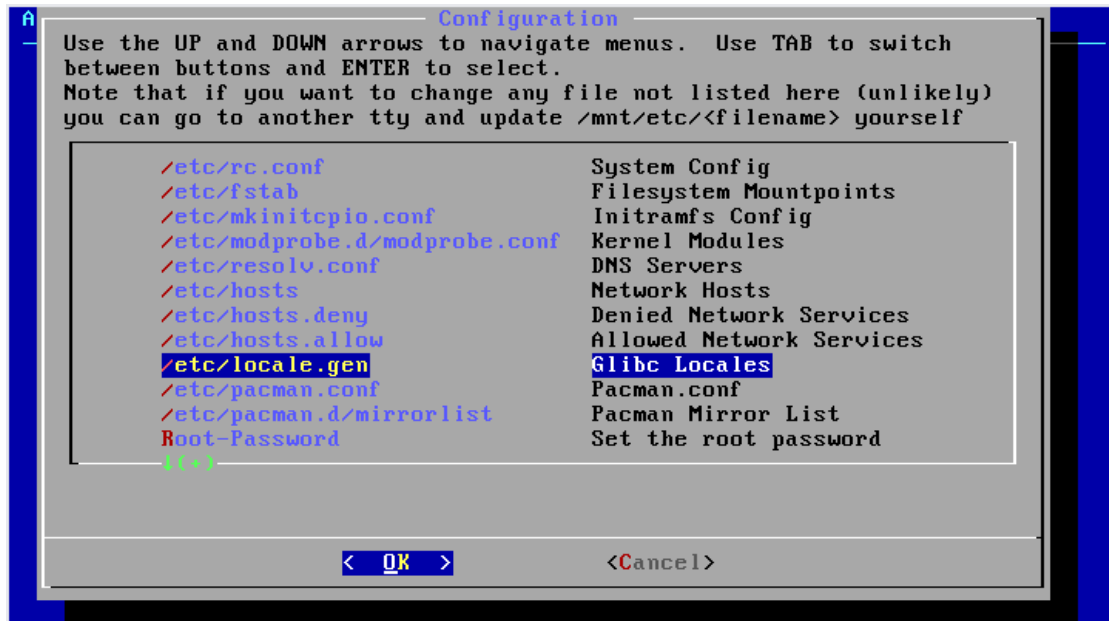
```

GNU nano 2.0.9      File: /mnt/etc/rc.conf      Modified
#
# This now requires the netcfg package
#
##NETWORKS=(main)
#
# -----
# DAEMONS
# -----
#
# Daemons to start at boot-up (in this order)
# - prefix a daemon with a ! to disable it
# - prefix a daemon with a @ to start it up in the background
#
DAEMONS=(syslog-ng network netfs crond)_

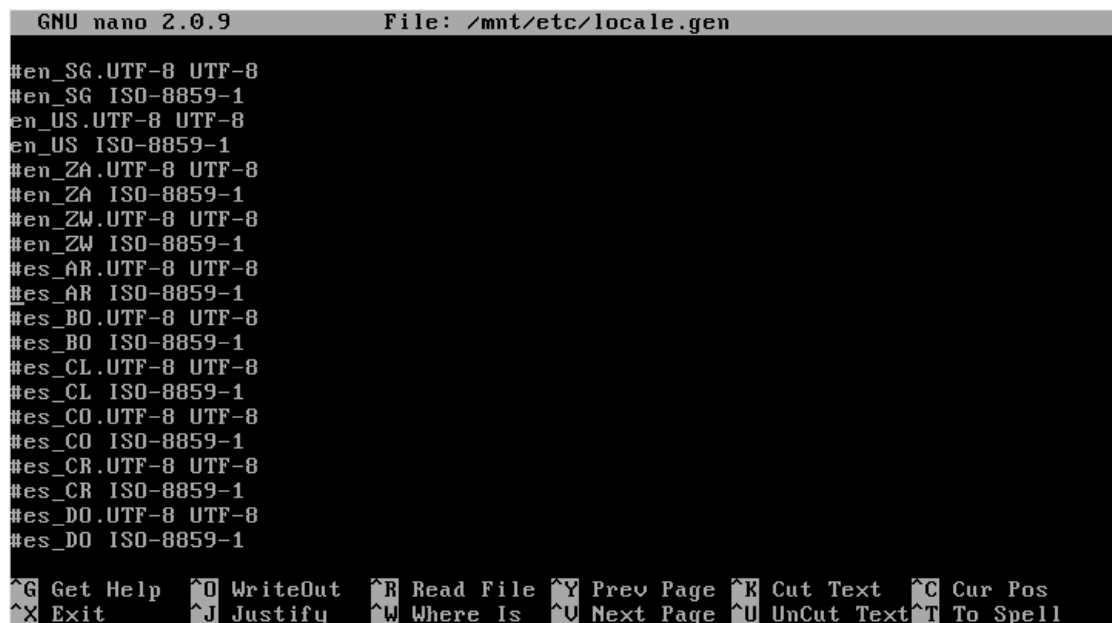
```

^G Get Help ^O WriteOut ^R Read File ^Y Prev Page ^K Cut Text ^C Cur Pos
 ^X Exit ^J Justify ^W Where Is ^U Next Page ^U UnCut Text ^T To Spell

56 rcconf 中 Daemons



57 这个 localegen 要编辑的和前边 rdconf 选择的 zh_CN.UTF8 有关



57.1 注释两项 en,us 的

```

GNU nano 2.0.9      File: /mnt/etc/locale.gen      Modified
#uz_UZ ISO-8859-1
#uz_UZ@cyrillic UTF-8
#ve_ZA UTF-8
#vi_VN.TCVN TCUN5712-1
#vi_VN UTF-8
#wa_BE ISO-8859-1
#wa_BE@euro ISO-8859-15
#wa_BE.UTF-8 UTF-8
#wo_SN UTF-8
#xh_ZA.UTF-8 UTF-8
#xh_ZA ISO-8859-1
#yi_US.UTF-8 UTF-8
#yi_US CP1255
#yo_NG UTF-8
zh_CN.GB18030 GB18030
zh_CN.GBK GBK
zh_CN.UTF-8 UTF-8
zh_CN GB2312
#zh_HK.UTF-8 UTF-8
#zh_HK BIG5-HKSCS

^G Get Help  ^O WriteOut  ^R Read File  ^Y Prev Page  ^K Cut Text   ^C Cur Pos
^X Exit      ^J Justify   ^W Where Is   ^U Next Page  ^U UnCut Text ^T To Spell

```

57.2 反注释 zh CN 的

```

GNU nano 2.0.9      File: /mnt/etc/pacman.conf
# If you wish to use different paths, uncomment and update the paths.
#RootDir      = /
#DBPath       = /var/lib/pacman/
#CacheDir     = /var/cache/pacman/pkg/_
#LogFile      = /var/log/pacman.log
HoldPkg       = pacman glibc
# If upgrades are available for these packages they will be asked for first
SyncFirst     = pacman
#XferCommand  = /usr/bin/wget --passive-ftp -c -O %o %u
#XferCommand  = /usr/bin/curl %u > %o
#CleanMethod  = KeepInstalled

# Pacman won't upgrade packages listed in IgnorePkg and members of IgnoreGroup
#IgnorePkg    =
#IgnoreGroup  =

#NoUpgrade    =
#NoExtract    =

# Misc options (all disabled by default)

^G Get Help  ^O WriteOut  ^R Read File  ^Y Prev Page  ^K Cut Text   ^C Cur Pos
^X Exit      ^J Justify   ^W Where Is   ^U Next Page  ^U UnCut Text ^T To Spell

```

58_etc_pacman.conf_配置

```

GNU nano 2.0.9      File: /mnt/etc/pacman.conf      Modified
# The header [repo-name] is crucial - it must be present and
# uncommented to enable the repo.
#
# Testing is disabled by default. To enable, uncomment the following
# two lines. You can add preferred servers immediately after the header,
# and they will be used before the default mirrors.
#[testing]
#Include = /etc/pacman.d/mirrorlist

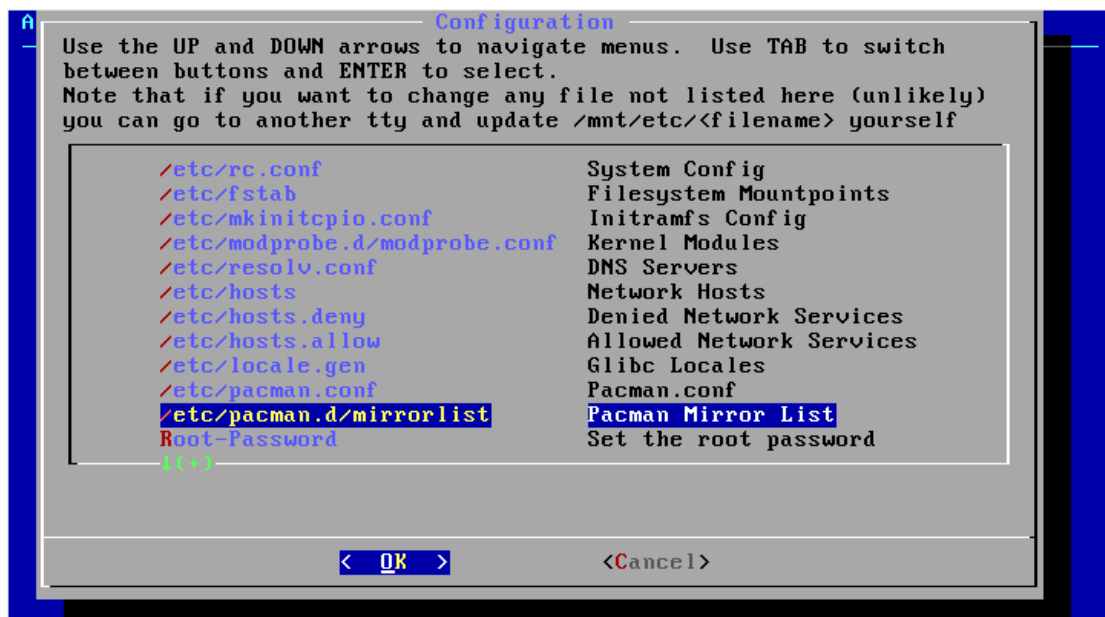
[core]
# Add your preferred servers here, they will be used first
#Server = file:///mnt/wowoto
#Include = /etc/pacman.d/mirrorlist

[extra]
# Add your preferred servers here, they will be used first
#Include = /etc/pacman.d/mirrorlist

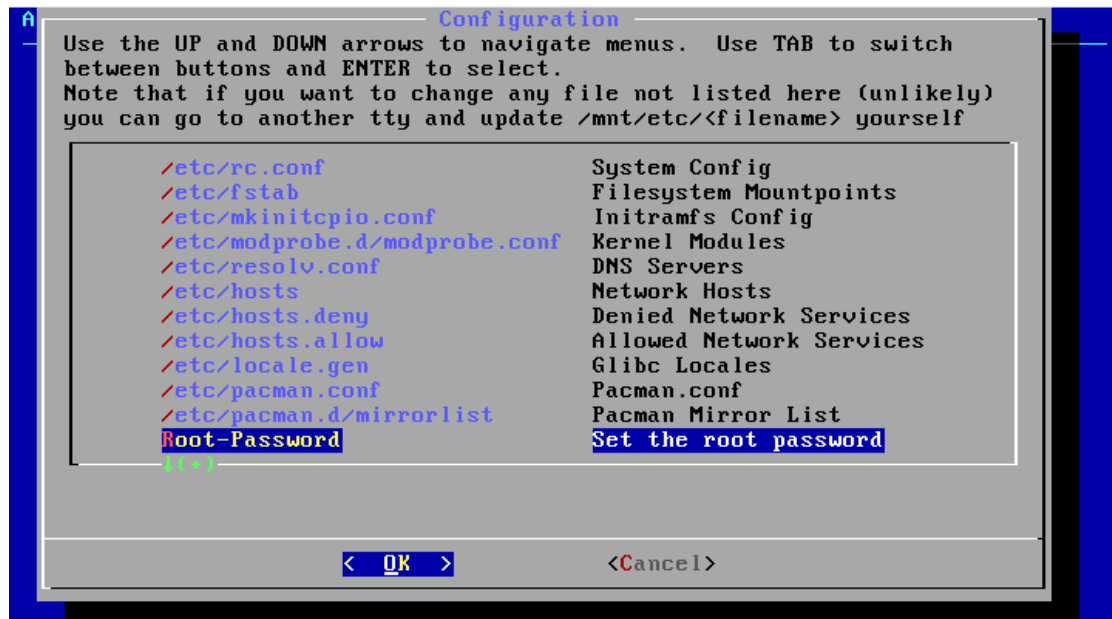
[community]
[ Wrote 78 lines ]
^G Get Help  ^O WriteOut  ^R Read File  ^Y Prev Page  ^K Cut Text    ^C Cur Pos
^X Exit      ^J Justify   ^W Where Is   ^U Next Page  ^U UnCut Text ^T To Spell

```

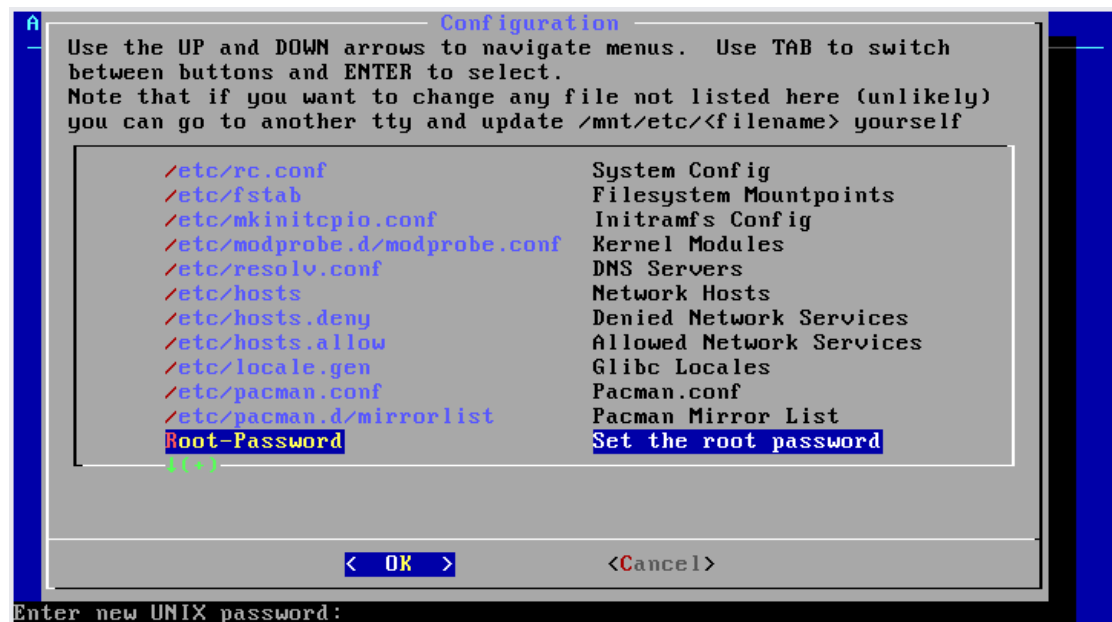
58.1 使用本地包 __配置)



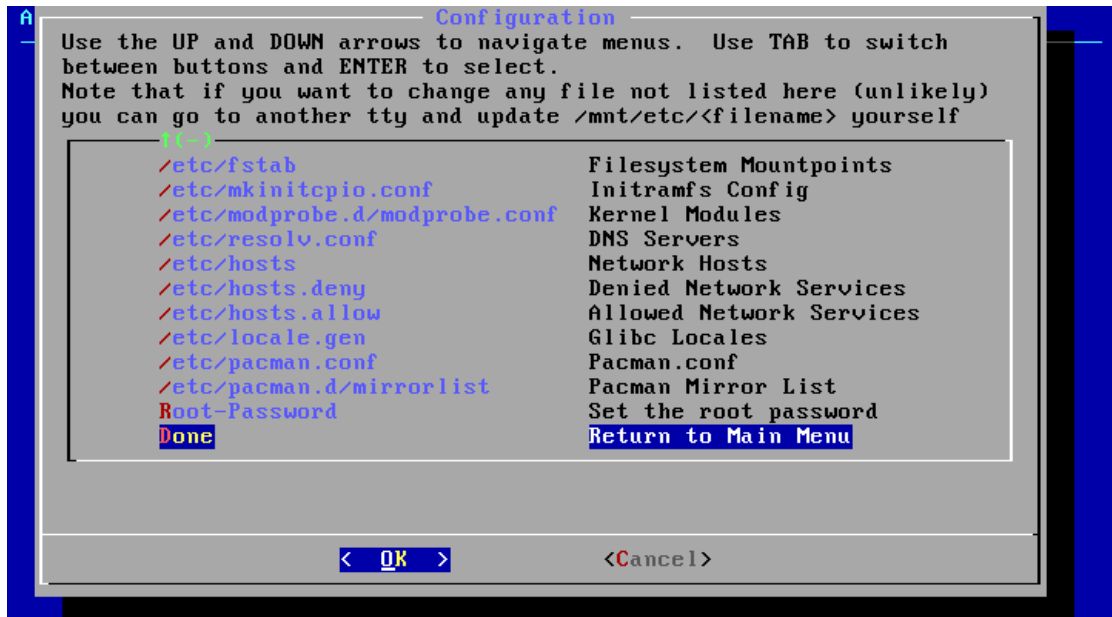
59 配置以后更新或下载时使用 的服务地址



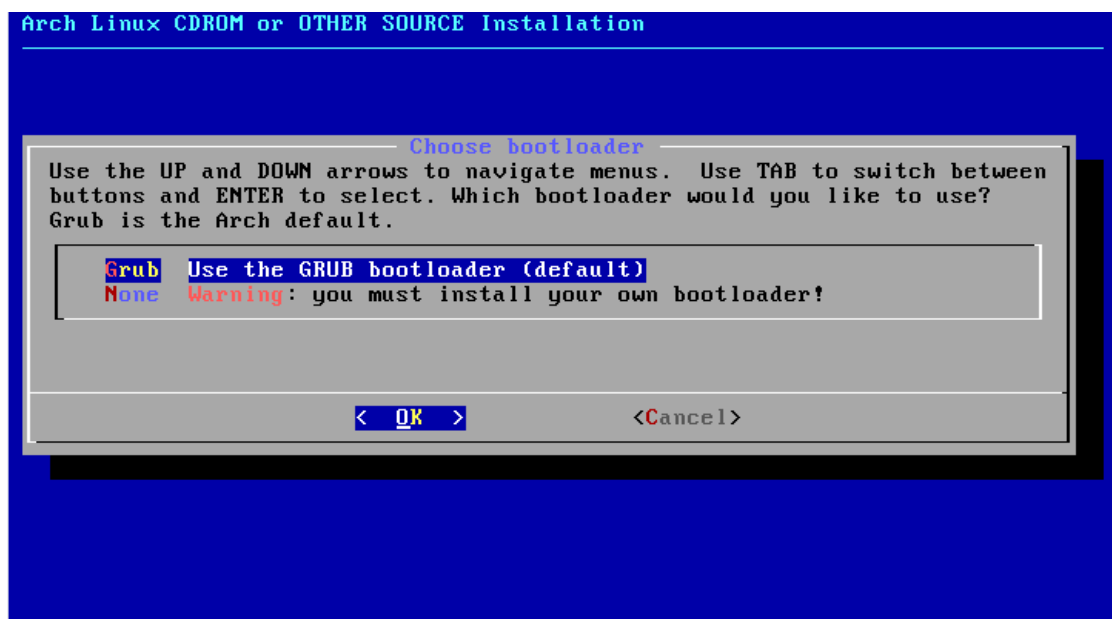
60 设置 root 密码



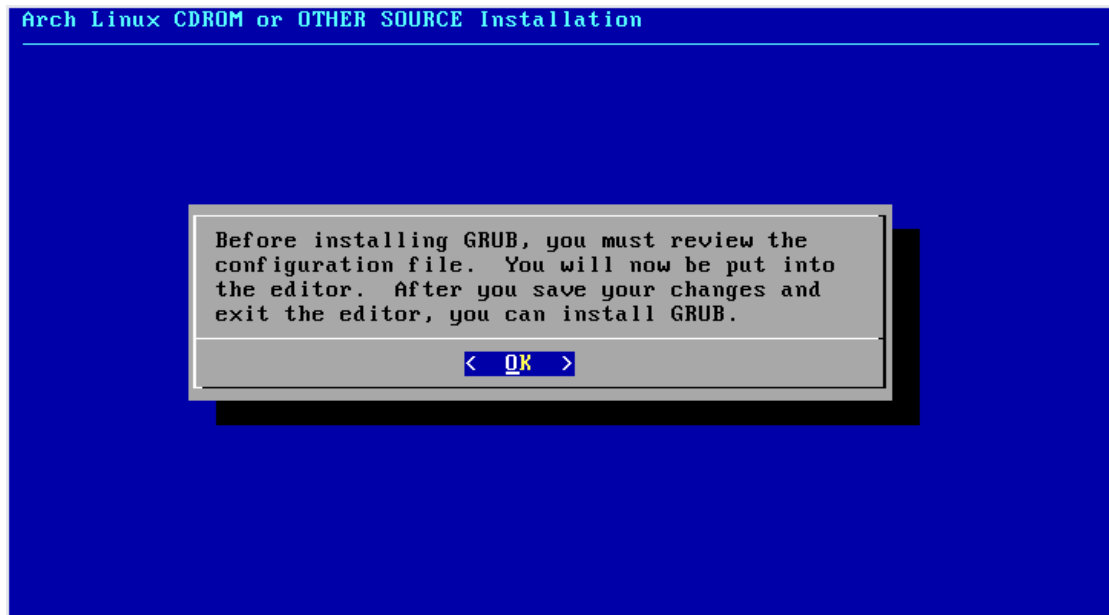
60.1 输入密码



61 结束配置



62.1



62.2

```
GNU nano 2.0.9      File: /mnt/boot/grub/menu.lst
kernel /vmlinuz26 root=/dev/disk/by-uuid/0e60c541-cdf3-4324-9d89-da2bcb355314 ro
initrd /kernel26.img

# (1) Arch Linux
title Arch Linux Fallback
root (hd0,0)
kernel /vmlinuz26 root=/dev/disk/by-uuid/0e60c541-cdf3-4324-9d89-da2bcb355314 ro
initrd /kernel26-fallback.img

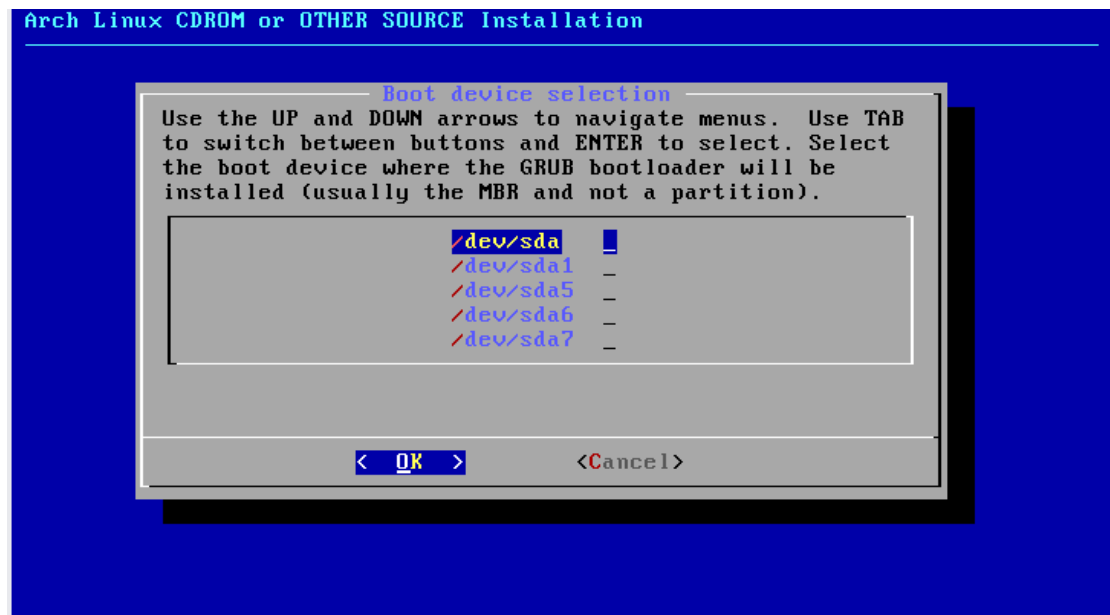
# (2) Windows
#title Windows
#rootnoverify (hd0,0)
#makeactive
#chainloader +1

^G Get Help  ^O WriteOut  ^R Read File ^Y Prev Page ^K Cut Text  ^C Cur Pos
^X Exit      ^J Justify   ^W Where Is  ^U Next Page ^U UnCut Text ^T To Spell
```

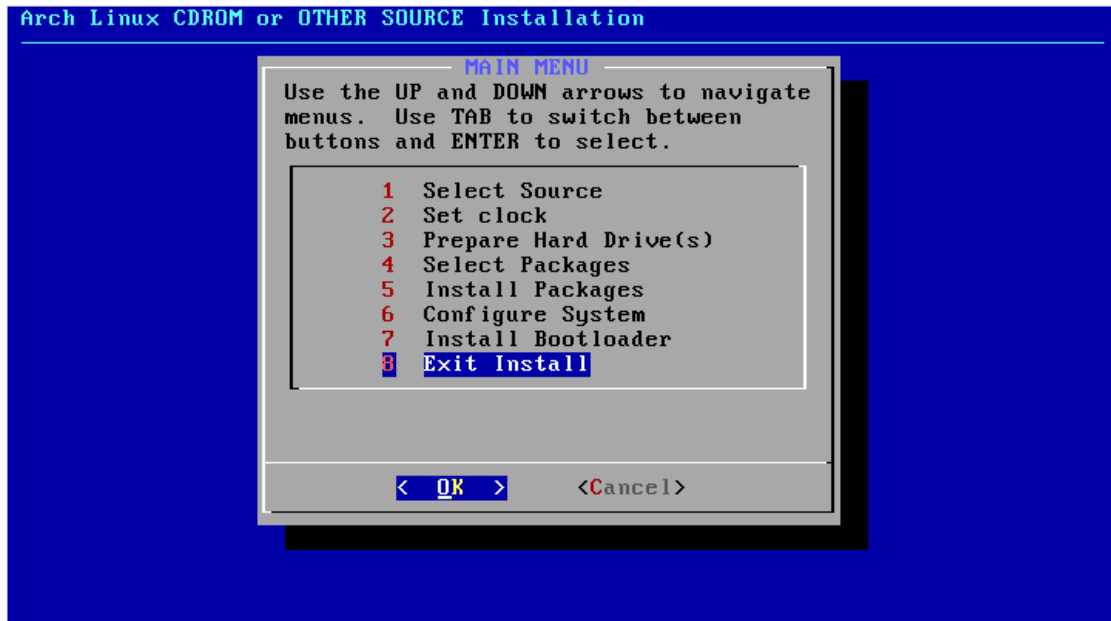
62.3 双系统 去除这 四个#



62 安装 grub...启动选项



63 写入



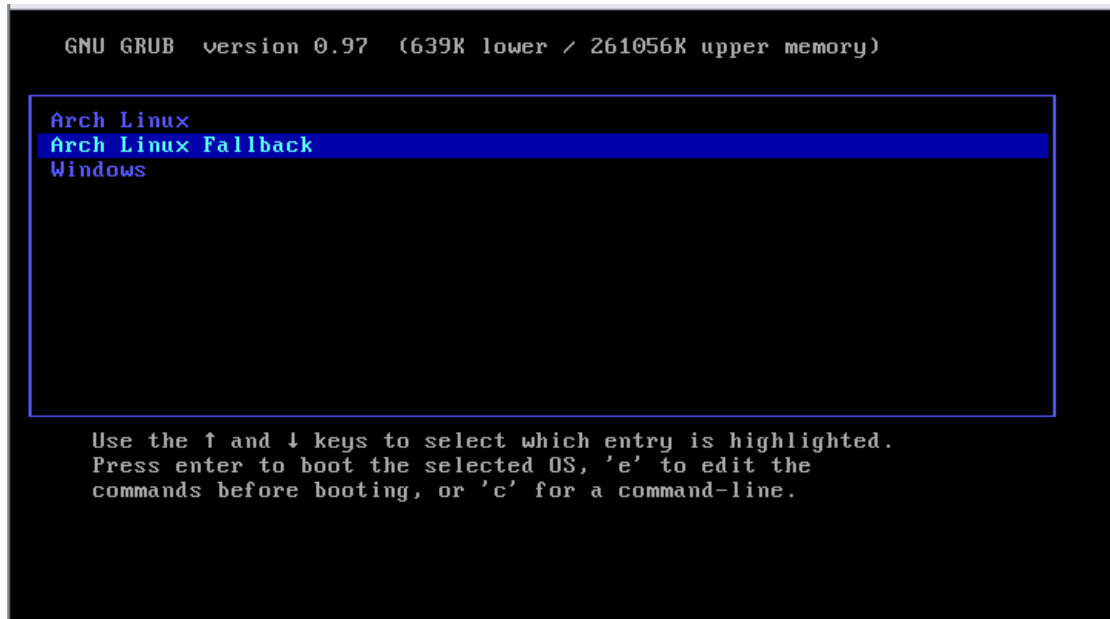
64 over



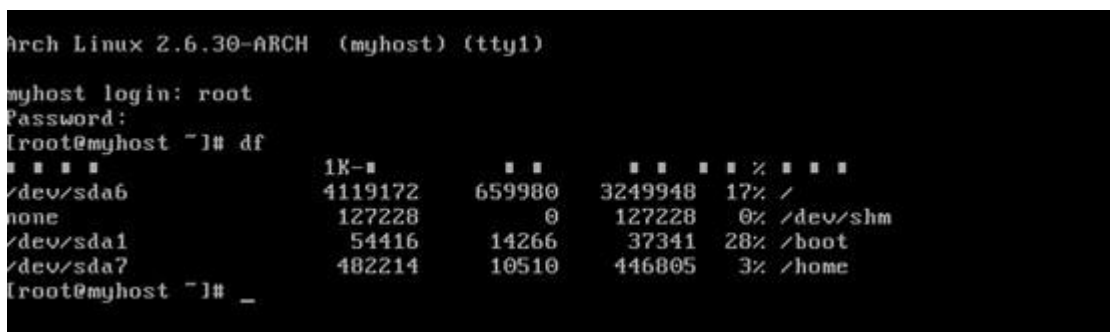
65ok

```
[root@archiso ~]# reboot_
```

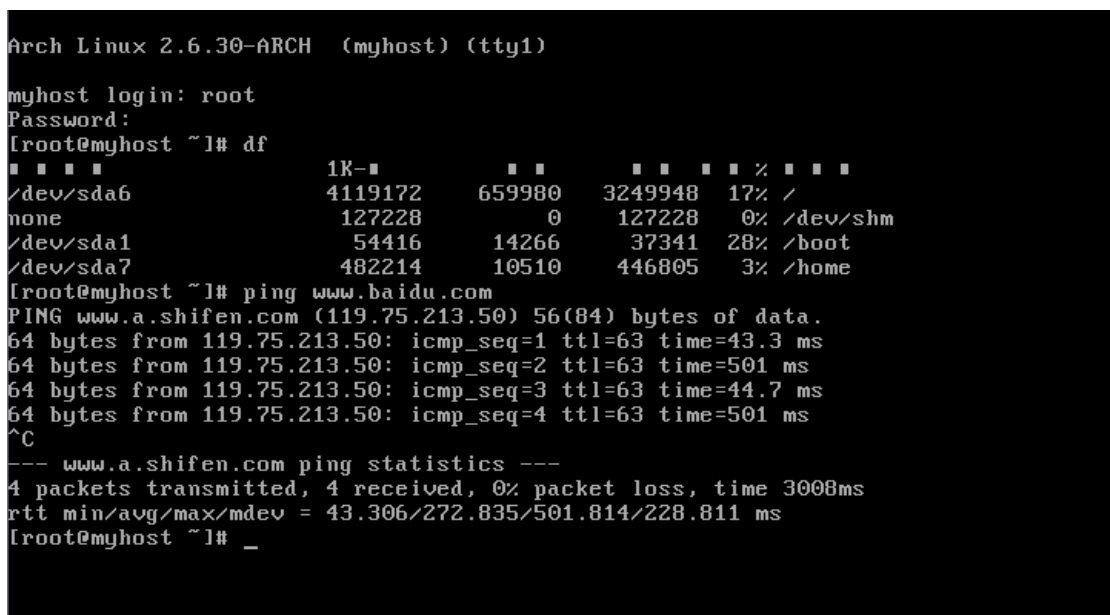
66 Reboot



67 重启 --进入系统，选第一个 arch linux



68 root 登录



69 ping 网络情况

```
[root@myhost ~]# pacman -Syu
:: [Progress Bar] ...
core 35.0K 38.8K/s 00:00:01 [Progress Bar] 100%
[Progress Bar] extra.db.tar.gz [Progress Bar] 449976/453100 bytes00 [Progress Bar] 90%
extra 442.5K 626.2M/s 00:00:00 [Progress Bar] 100%
community 366.8K 200.5K/s 00:00:02 [Progress Bar] 100%
:: [Progress Bar] ...
pacman
:: [Progress Bar] ...
:: [Progress Bar] [Y/n] _
```

70 更新

```
[root@myhost ~]# pacman -Syu
:: [Progress Bar] ...
core 35.0K 38.8K/s 00:00:01 [Progress Bar] 100%
[Progress Bar] extra.db.tar.gz [Progress Bar] 449976/453100 bytes00 [Progress Bar] 90%
extra 442.5K 626.2M/s 00:00:00 [Progress Bar] 100%
community 366.8K 200.5K/s 00:00:02 [Progress Bar] 100%
:: [Progress Bar] ...
pacman
:: [Progress Bar] ...
:: [Progress Bar] [Y/n] y

[Progress Bar] ...
[Progress Bar] ...

(3) [Progress Bar] libarchive-2.7.1-1 libfetch-2.26-1 pacman-3.3.2-1

[Progress Bar] : 1.15 MB
[Progress Bar] : 3.37 MB

[Progress Bar] [Y/n] y
:: [Progress Bar] core [Progress Bar] ...
libarchive-2.7.1-1-i686 487.1K 238.0K/s 00:00:02 [Progress Bar] 100%
-
```

71pacman 自身

```
attr-2.4.44-1 acl-2.2.48-1 bash-4.0.035-1 binutils-2.20-1
cloop-ppl-0.15.7-1 libcap-2.17-1 gcc-libs-4.4.2-2 db-4.8.24-1
pam-1.0.4-2 coreutils-7.6-1 device-mapper-2.02.53-1
util-linux-ng-2.16-1 e2fsprogs-1.41.9-1 popt-1.15-1
cryptsetup-1.0.7-1 dbus-core-1.2.16-1 dhcpcd-5.1.1-1
dialog-1.1_20080819-3 fakeroot-1.13.1-1 gcc-4.4.2-2 pcre-8.00-1
glib2-2.22.2-1 gpm-1.20.6-3 perl-5.10.1-5 groff-1.20.1-3
gzip-1.3.13-1 hdparm-9.27-1 sqlite3-3.6.19-1 heimdal-1.2.1-7
udev-146-2 initscripts-2009.08-1 iproute2-2.6.29-2
iptables-1.4.5-1 iw-0.9.17-1 kernel26-firmware-2.6.31-1
module-init-tools-3.11.1-1 kernel26-2.6.31.5-1 libevent-1.4.12-1
libpgp-error-1.7-2 libsasl-2.1.23-2 libldap-2.4.19-1
librpcsecgss-0.19-1 lvm2-2.02.53-1 man-db-2.5.6-1
man-pages-3.23-1 mlocate-0.22.2-2 ndiswrapper-utils-1.55-1
ndiswrapper-1.55-2 nfsidmap-0.23-3 nfs-utils-1.2.0-4
openssh-5.3p1-2 openvpn-2.1_rc20-1 pciutils-3.1.4-1
reiserfsprogs-3.6.21-2 sdparm-1.04-1 syslog-ng-3.0.4-1
tiacx-20080210-11 usbutils-0.86-2 vi-050325-1 wget-1.12-1
wireless-regdb-2009.08.05-1 xfsprogs-3.0.5-1
xz-utils-4.999.9beta-1

[Progress Bar] : 121.21 MB
[Progress Bar] : 379.87 MB

[Progress Bar] [Y/n] _
```

73 ps 补充说明下

74 新建一个账户 把它加入特定的组，图中提示 `hal` 和 `dbus` 未安装，所以应先安装;对于未存在的组可以先略过，不加入其中，这一步也可以到后边再操作。

75 安装 sudo

76 把 wowoto 加入 sudo 用户组

```

#
# This file MUST be edited with the 'visudo' command as root.
# Failure to use 'visudo' may result in syntax or file permission errors
# that prevent sudo from running.
#
# See the sudoers man page for the details on how to write a sudoers file.
#
# Host alias specification
#
# User alias specification
#
# Cmnd alias specification
#
# Defaults specification
#
# Runas alias specification
#
# User privilege specification
root    ALL=(ALL) ALL
wowoto  ALL=(ALL) ALL
# Uncomment to allow people in group wheel to run all commands
# %wheel    ALL=(ALL) ALL

```

76.1 如图中添加 wowoto ALL(ALL) ALL

```

[root@myhost ~]# pacman -S gamin hal acpid
...
(3)  gamin-0.1.10-1  hal-0.5.13-2  acpid-1.0.10-1
...
: 0.06 MB
: 2.58 MB
...
[Y/n] _

```

77 安装硬件相关的驱动，安装 gamin 代替 fam，因为 fam 会产生较大的日志文件

```

[root@myhost ~]# pacman -S alsa-utils alsa-oss
...
(3)  alsa-lib-1.0.21.a-1  alsa-utils-1.0.21-1  alsa-oss-1.0.17-1
...
: 1.56 MB
: 3.67 MB
...
[Y/n] _

```

78 配置声卡

```

[root@myhost ~]# gpasswd -a wowoto audio_

```

79 把需要的用户加入 audio 用户组


```
[root@myhost ~]# pacman -S xorg
xorg ■■■■■■■■■■■■■■■■■■■■■■...
:: ■■■■■ xorg ■■■■■■■■■■■■■■■■
    xf86-video-vesa  xorg-docs   xorg-fonts-100dpi  xorg-fonts-75dpi
    xorg-res-utils  xorg-server  xorg-server-utils  xorg-twm  xorg-utils
    xorg-xinit      xterm
:: ■■■■■■■■■■■■■■■■■ [Y/n]
```

```
[root@myhost ~]# pacman -S xf86-input-evdev
■ ■ ■ xf86-input-evdev-2.3.0-1 ■ ■ ■ ■ ■ -- ■ ■ ■ ■ ■
■ ■ ■ ■ ■ ■ ■ ...
■ ■ ■ ■ ■ ■ ■ ...

■ ■ (1)■ xf86-input-evdev-2.3.0-1

■ ■ ■ ■ ■ ■ : 0.00 MB
■ ■ ■ ■ ■ ■ : 0.06 MB

■ ■ ■ ■ ■ ■ [Y/n] _
```

```
root@myhost ~]# pacman -S mesa
■ ■ ■ ■ ■ ■ ■ ...
■ ■ ■ ■ ■ ■ ■ ...

(2)■   dri2proto-2.1-1   mesa-7.6-2

■ ■ ■ ■ ■ :    0.73 MB
■ ■ ■ ■ ■ :    3.72 MB

■ ■ ■ ■ ■ [Y/n] _
```

www.ubuntu.cn

```
[root@myhost ~]# pacman -S nvidia
:: nvidia-utils libgl libgl [Y/n] Y
(1) libgl-7.6-2
: 2.91 MB
(2) nvidia-utils-190.42-1 nvidia-190.42-1
: 13.53 MB
: 40.73 MB
[Y/n] _
```

84 Nvidia

```
[root@myhost ~]# nvidia-xconfig
WARNING: Unable to locate/open X configuration file.
New X configuration file written to '/etc/X11/xorg.conf'
[root@myhost ~]# _
```

85 驱动配置（这是在虚拟机器，所以提示错误）



86 放松以下~忧郁，伤感

```
[root@myhost ~]# pacman -S xf86-input-mouse xf86-input-keyboard
:: xf86-input-mouse xf86-input-keyboard
(2) xf86-input-mouse-1.5.0-1 xf86-input-keyboard-1.4.0-1
: 0.04 MB
: 0.10 MB
[Y/n] _
```

87 安装输入设备驱动

```
[root@myhost ~]# vi /etc/X11/xorg.conf_
```

88 INPUT 热插拔问题解决方案 88~89.1

```
GNU nano 2.0.9          ■ ■ : /etc/X11/xorg.conf

# nvidia-xconfig: X configuration file generated by nvidia-xconfig
# nvidia-xconfig:  version 1.0  (buildmeister@builder63) Tue Oct 20 21:00:15 P$

Section "ServerLayout"
    Identifier      "Layout0"
    Screen          0      "Screen0"
    InputDevice     "Keyboard0" "CoreKeyboard"
    InputDevice     "Mouse0" "CorePointer"
EndSection

Section "Files"
EndSection

Section "InputDevice"
    # generated from default
    Identifier      "Mouse0"
    Driver          "mouse"
    Option          "Protocol" "auto"
    Option          "Device"   "/dev/psaux"
    Option          "Emulate3Buttons" "no"
    [ ■ ■ ■ 54 ■ ]
    ^G ■ ■      ^O ■ ■      ^R ■ ■      ^Y ■ ■      ^K ■ ■ ■ ■      ^C ■ ■ ■ ■
    ^X ■ ■      ^J ■ ■      ^W ■ ■      ^U ■ ■      ^T ■ ■ ■ ■
```

89 编辑 x11.conf 文件，关闭热插拔

```
Section "ServerFlags"
    Option "AutoAddDevices" "false"
EndSection
```

89.1 新加入的内容

```
[root@myhost ~]# pacman -S gnome _
```

90 安装 gnome 桌面（请自主选择 kde 或 gnome，以下操作都比较简单）

```
[root@myhost ~]# pacman -S gnome  
gnome ■■■■■■■■■■■■■■■■■■■■■■ ...  
:: ■■■■■■■■■■■■■■■■■■■■■■  
    epiphany gnome-applets gnome-backgrounds gnome-control-center  
    gnome-desktop gnome-icon-theme gnome-media gnome-mime-data gnome-panel  
    gnome-screensaver gnome-session gnome-settings-daemon gnome-themes  
    gnome2-user-docs libgail-gnome metacity nautilus notification-daemon  
    yelp  
:: ■■■■■■■■■■■ [Y/n]
```

90.1 在这儿，您可以选择 n ，然后逐一确定您需要的——倒杯茶吧，有点慢

```
[root@myhost ~]# pacman -S gnome-extra_
```

91 安装 gnome-extra 的

```
[root@myhost ~]# pacman -S gdm_
```

93 install gdm

```
[root@myhost ~]# pacman -S ttf-bitstream-vera
# # # # # ...
# # # # # ...
# # (1) # ttf-bitstream-vera-1.10-6
# # # # # : 0.33 MB
# # # # # : 0.61 MB
# # # # # [Y/n]
```

94 安装 一种字体

```
[root@myhost ~]# pacman -S dbus_
```

95 dbus （这个是前面我安装了的，但是忘了截图）

```
[root@myhost ~]# pacman -S gnome-network-manager_
```

96 安装网络管理器

```
# -----
# DAEMONS
# -----
#
# Daemons to start at boot-up (in this order)
# - prefix a daemon with a ! to disable it
# - prefix a daemon with a @ to start it up in the background
#
DAEMONS=(@syslog-ng hal !network @networkmanager netfs crond @alsa @gdm)
```

97 修改 Daemons 守护进程

```
[wowoto@archlinux ~]$ usermod -aG video,audio,floppy,lp,storage,network,fal,dbus,
,wheel,optical wowoto
```

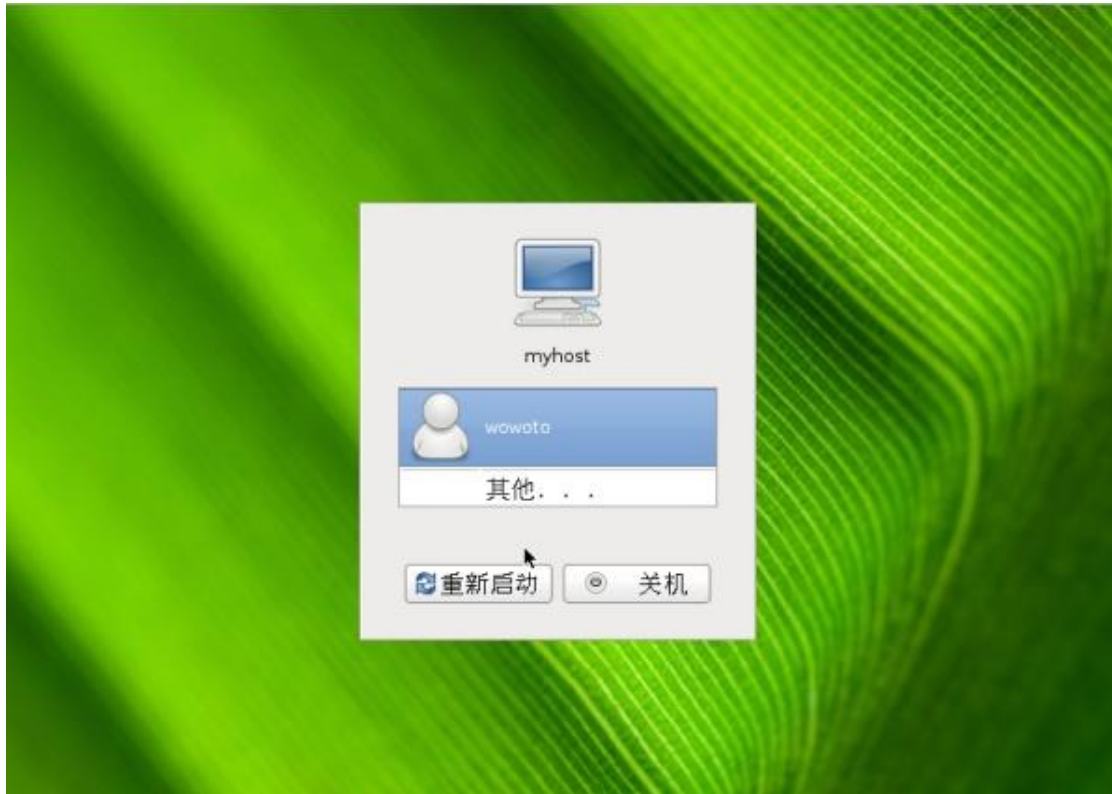
98 加入组~ 很重要!!

```
[wowoto@archlinux ~]$ sudo pacman -S cpufrequtils
密码: 
```

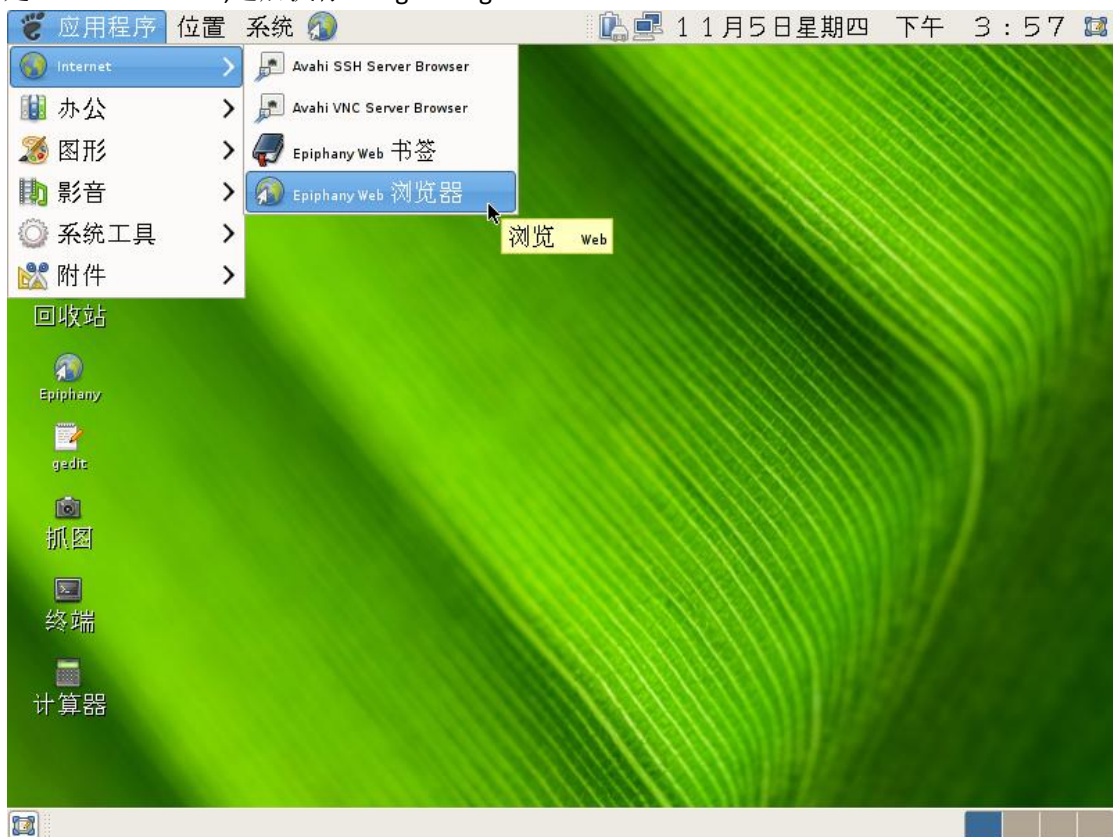
99 Cpu 降频

```
# -----
# DAEMONS
# -----
#
# Daemons to start at boot-up (in this order)
# - prefix a daemon with a ! to disable it
# - prefix a daemon with a @ to start it up in the background
#
DAEMONS=(@syslog-ng hal fam !network @networkmanager @acpi-cpufreq cpu_ondemand cpu_performance netfs @alsa crond @gdm)
```

100 降频,加入 daemons



100.1 开机登录画面----100.2 虚拟机开机画面（注意，虚拟机器不是安装 nvidia 显卡驱动，是 xf86-video-vesa ,之后执行 Xorg -configure）



100.2 基本桌面，带浏览器，计算器等

```
[wowoto@archlinux ~]$ sudo pacman -S firefox firefox-i18n
密码: █
```

101 安装 firefox

```
# two lines. You can add preferred servers immediately after the header,
# and they will be used before the default mirrors.
#[testing]
#Include = /etc/pacman.d/mirrorlist

[core]
# Add your preferred servers here, they will be used first
#Server = file:///mnt/D/archlinux/core/os/i686
Server = http://ftp.sjtu.edu.cn/pub/mirror2/www.archlinux.org/core/os/i686/
Include = /etc/pacman.d/mirrorlist

[extra]
# Add your preferred servers here, they will be used first
#Server = file:///mnt/D/archlinux/extra/os/i686
Server = http://ftp.sjtu.edu.cn/pub/mirror2/www.archlinux.org/extra/os/i686/
Include = /etc/pacman.d/mirrorlist

[community]
# Add your preferred servers here, they will be used first
Server = http://ftp.sjtu.edu.cn/pub/mirror2/www.archlinux.org/community/os/i686/
Include = /etc/pacman.d/mirrorlist

# An example of a custom package repository. See the pacman manpage for
# tips on creating your own repositories.
#[custom]
#Server = file:///mnt/D/archlinux

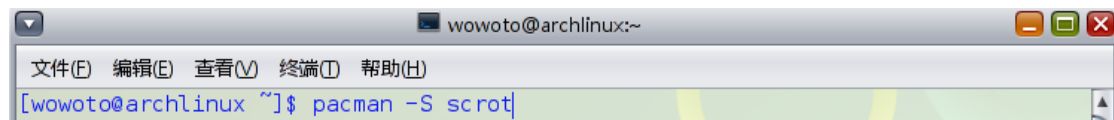
~
~
(END)
```

续:

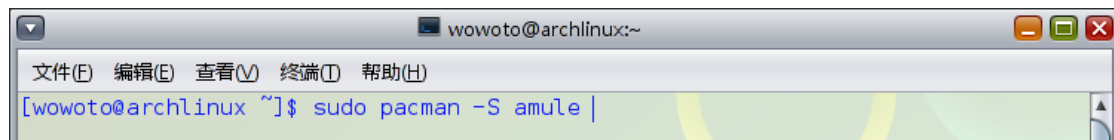
102_etc_pacman.conf 设置 pacman..



103 图片查看



104 截图软件



105 安装 amule

```
[wowoto@archlinux ~]$ sudo mv /usr/lib/stardict/plugins/stardict_spell.so{,.bak}
```

106 stardict 出现段错误...说不清楚的错误...您或许会遇到,解决如上.